

# Ratio of Students per Household

# 3

While the common assumption is that every home contains an average of two students, in reality this ratio of students per home is actually much lower. Most suburban Districts average about 0.5 to 0.75 students per home overall, but more importantly, some specific neighborhoods have much higher and much lower ratios. It is important for PASA to understand which neighborhoods are more student-oriented and which neighborhoods house more empty-nest families so that comparable ratios can be applied to the projected new housing.

## Ratios of Students per Household – Single Family Housing

The first map and chart in this chapter show ratios of students for single-family units within major subdivisions. These ratios were gathered through field work to analyze the number of currently occupied homes on each street for representative subdivisions throughout the District.

The ratios of students per home ranged from 0.00 in several subdivisions to 2.76 in Gleannloch Farms – Arbors. The weighted average throughout the District is **0.63** students per single-family home.

The **highest ratios** of students per occupied home were found in the following subdivisions:

Planning Unit	Development	Ratio
5C	<i>Gleannloch Farms - Arbors</i>	2.76
61, 62A	<i>Willowood</i>	1.3
52B	<i>Timber Meadow</i>	1.28
57B	<i>Copper Falls</i>	1.27
34B	<i>Villas at Candlelight Park</i>	1.21
9B	<i>Five Oaks MHP</i>	1.2
40	<i>Lafone Ests.</i>	1.19
5C	<i>Gleannloch Farms - Manor Ests.</i>	1.18
55C	<i>Hamill Ranch</i>	1.18
60	<i>Blue Creek</i>	1.17

The ***lowest ratios*** were found in the following subdivisions:

<b>Planning Unit</b>	<b>Development</b>	<b>Ratio</b>
<b>1A</b>	<i>Augusta Pines - The Gardens</i>	0.00
<b>1A</b>	<i>Augusta Pines - Shadow Creek Ests. Villas</i>	0.00
<b>13B</b>	<i>Bridgestone Lakes</i>	0.00
<b>55B</b>	<i>Champions Crossing</i>	0.00
<b>31A</b>	<i>Country Lake Estates</i>	0.00
<b>31D</b>	<i>Cypresswood Glen - The Pk at Cypresswood Glen</i>	0.00
<b>41B</b>	<i>Ests. at Wimbledon Champions</i>	0.00
<b>16</b>	<i>Lyndhurst Village</i>	0.00
<b>46</b>	<i>Marble Gate Court</i>	0.00
<b>32E</b>	<i>Middlecreek Village</i>	0.00
<b>1A</b>	<i>Oakmont Village - The Preserve</i>	0.00
<b>1A</b>	<i>Oak Trace - The Preserve</i>	0.00
<b>1A</b>	<i>Oak Hill Estates - The Preserve</i>	0.00
<b>39</b>	<i>Terravista</i>	0.00
<b>39</b>	<i>Terravista - Terravista Estates</i>	0.00
<b>1A</b>	<i>The Villas</i>	0.00
<b>20B</b>	<i>Vintage DiVita TH</i>	0.00
<b>41B</b>	<i>Wimbledon Champions Estates</i>	0.00

Such data are helpful in understanding why students are more dense in specific locations and which neighborhoods are empty-nest areas. They also point to neighborhoods that are disproportionately oriented to older students or to young students. The ratios help to estimate the grade-groups that will live in these neighborhoods over time, and, most importantly, assist in establishing the potential ratio of students per grade-group for comparable new subdivisions and new apartment complexes.

Although these ratios are utilized to obtain projections of added students for all new subdivisions and Planning Units, it is necessary to continue evaluating long-term trends in the ratios, as they will change as a subdivision or apartment complex ages. Just over the past three years, the ratios of students per occupied home has changed from 0.68 in 2009, to 0.65 in 2010, and down to 0.63 this Fall, 2011. PASA has no simple explanation for this decline, in that homes should be becoming more dense with students, as families move in together and as the population continues to transition to more Hispanic homes with larger household sizes. It must be the case that more households have empty-nests, that is, are either (1) very young homebuyers -- which is not likely due to the lack of home loans for this cohort; or, are (2) older buyers without children.

## Ratios of Students per Household – Multi-Family Housing

In multi-family apartment complexes, the ratios of students per unit ranged from **0.04** to **1.22** in specific complexes, and the weighted average throughout the District was **0.40** students per apartment unit. At least 8,033 units within the District are occupied, with 3,204 students residing in those apartments. Rosslyn Heights had the highest ratio of students per unit, at 1.22, and Waterman Crossing had a 0.04.

The ratios of students per units have risen in 2011. There were 0.34 students per occupied units, on the average, in both 2009 and 2010 to 0.40 in 2011. During the past year, four to five apartment complexes have been under renovation, so this increase has occurred even while some units were off-line for rehab purposes.

Also, the occupancy rates have significantly increased. In 2009, 80% of all units were occupied, but some of these were in new apartments that were still in the process of becoming occupied. In 2010, 88% of all units were occupied, and in 2011, there were 91% occupied – even while four to five complexes were undergoing renovations. This 2011 occupancy rate points to the currently high dependency on rental units, since loans for homes are not easily accessible.

## Long Term Trends in Ratios of Students per Home and Apartment

PASA first began measuring the ratios of students per household in Klein I.S.D. in 2003. The next chart in the chapter details the average ratios for Single- and Multi-Family units within the District between 2003 and 2011. The average ratios of students per household for the Multi-Family units has fluctuated slightly over the decade, but had remained around 0.37 and this year up to 0.40. The Single-Family ratios, however, have fluctuated, but were 0.71 students per occupied home in 2003, and are now 0.63. Many subdivisions are starting to see declines in students as they become more empty-nest oriented. And, some of these declines are expected to increase, as other subdivisions begin to mature – and reach over 34 years as the average age of dwellings. Conversely, many of the multi-family ratios are expected to increase as the district matures.

## Ratios Between 2021 and Build-Out

Far more difficult than projecting future housing is the estimate of how many students, on the average, will live in each existing home and apartment unit. These ratios change each year by subdivision and apartment complex, but they also change significantly as a Districtwide average – particularly as the District increases in Hispanic population. When PASA first began collecting data on the ratio of students per subdivision, the average ratio for in 2003 was 0.71 for SF and 0.37 for MF. As noted above in several locations of this 2011 Demographic Update, the number of students per

single-family occupied unit averages 0.63 this school year, with 0.40 in each multi-family unit that is occupied.

In the first decade of this millennium (i.e., 2000 to 2010), Klein was attracting many new homeowners who were young and most had no children yet in school – primarily due to the availability of subprime loans. As a result of great changes in availability of loans and in the types of loans, the District's present housing market is changing and maturing. *The single-family housing units will likely have 0.61 to 0.75 students per unit by 2021 as an average.*

What is likely in the interim, however, is that many subdivisions that have built-out over the last decade can be expected to increase upwards to near 1 child per home for a period of years, before beginning a decline – post 2021. Examples of these increases are seen especially in places like Gleannloch Farms, where Dove Manor, Arbors, Lake Estates, and Manor Estates all have ratios above .70

But, it should be emphasized that an extraordinary number of the existing homes in the District have older, empty-nest owners, homebuyers, and this can all be viewed as spawning gradually lower ratios of students per home in older subdivisions. Examples of declines in these ratios in older subdivisions are Champions Trail, Dove Meadows, and Huntwick Forest.

Likewise, the apartments may continue to attract a larger ratio of students each year – if the economy does not improve. In 2003, there were 37 complexes in K.I.S.D. These totaled 6,990 units with 2,586 students living in these units, for a ratio of 0.37. In 2003, the larger proportion of students per unit were represented by families awaiting entry into single-family homes, which is not the type of renter seen today.

Now, in 2011, there are 3,204 students in 9,154 units in 51 apartment complexes. The occupancy rates are very high, denoting a big demand for these units currently – caused by the poor economy and long-term challenges of getting into an owned home. This year, as noted earlier, there is a ratio of 0.40.

For 2021, which is the end of the ten-year projection period on which this Report is based, it can be presumed that the ratio will be floating somewhere at 0.37 to 0.40 – and perhaps 0.45. And, by build-out, the multi-family ratio should be 0.45 (or higher) in the District.



## Klein ISD: Ratio of Students per Single Family Home by Subdivision

Planning Unit	Subdivision	Street Name	Total Ratio	# of Students	# of Homes	PK-5th Ratio	PK-5th Students	6th-8th Ratio	6th-8th Students	9th-12th Ratio	9th-12th Students
<b>3C</b>	Albury Trails Estates		0.36	13	36	0.28	10	0.03	1	0.06	2
		<b>Weighted Ratio:</b>	<b>0.36</b>			<b>0.28</b>		<b>0.03</b>		<b>0.06</b>	
<b>58</b>	Ash Creek		1.30	39	30	0.93	28	0.23	7	0.13	4
		Woodland Glade									
		Sunny Creek	0.57	8	14	0.21	3	0.07	1	0.29	4
		Golden Stream	1.09	36	33	0.42	14	0.21	7	0.45	15
		<b>Weighted Ratio:</b>	<b>1.08</b>			<b>0.58</b>		<b>0.19</b>		<b>0.30</b>	
<b>5I</b>	Ashford Grove		0.45	13	29	0.17	5	0.03	1	0.24	7
		<b>Weighted Ratio:</b>	<b>0.45</b>			<b>0.17</b>		<b>0.03</b>		<b>0.24</b>	
<b>5I</b>	Ashford Place		0.51	116	226	0.25	57	0.13	30	0.13	29
		<b>Weighted Ratio:</b>	<b>0.51</b>			<b>0.25</b>		<b>0.13</b>		<b>0.13</b>	
<b>1D</b>	Auburn Lakes - Auburn Lakes Estates		0.52	17	33	0.18	6	0.15	5	0.18	6
		<b>Weighted Ratio:</b>	<b>0.52</b>			<b>0.18</b>		<b>0.15</b>		<b>0.18</b>	
<b>1B</b>	Auburn Lakes - Auburn Lakes Pines		0.47	79	167	0.29	48	0.10	16	0.09	15
		<b>Weighted Ratio:</b>	<b>0.47</b>			<b>0.29</b>		<b>0.10</b>		<b>0.09</b>	
<b>1B</b>	Auburn Lakes - Auburn Lakes Reserve		0.48	75	156	0.28	44	0.08	12	0.12	19
		<b>Weighted Ratio:</b>	<b>0.48</b>			<b>0.28</b>		<b>0.08</b>		<b>0.12</b>	
<b>1B</b>	Auburn Lakes - Auburn Lakes Retreat		0.59	75	127	0.29	37	0.09	11	0.21	27
		<b>Weighted Ratio:</b>	<b>0.59</b>			<b>0.29</b>		<b>0.09</b>		<b>0.21</b>	
<b>1A</b>	Auburn Lakes - The Courts at Auburn Lakes		0.11	2	18	0.00	0	0.00	0	0.11	2
		Bow Wood									
		Arcane	0.10	3	30	0.10	3	0.00	0	0.00	0
		<b>Weighted Ratio:</b>	<b>0.10</b>			<b>0.06</b>		<b>0.00</b>		<b>0.04</b>	
				5	48		60%		0%		40%



## Klein ISD: Ratio of Students per Single Family Home by Subdivision

Planning Unit	Subdivision	Street Name	Total Ratio	# of Students	# of Homes	PK-5th Ratio	PK-5th Students	6th-8th Ratio	6th-8th Students	9th-12th Ratio	9th-12th Students
1D	Auburn Lakes - The Village	Holden Mills	0.76	22	29	0.34	10	0.21	6	0.21	6
		Quiet Pointe	0.58	11	19	0.37	7	0.11	2	0.11	2
		Morningsong	0.82	9	11	0.55	6	0.09	1	0.18	2
		<b>Weighted Ratio: 0.71</b>	42	59	55%		21%		24%		
1A	Augusta Pines - The Estates		0.55	6	11	0.09	1	0.18	2	0.27	3
		<b>Weighted Ratio: 0.55</b>	6	11	0.09		0.18		0.27		
1A	Augusta Pines - The Gardens		0.00	0	6	0.00	0	0.00	0	0.00	0
		<b>Weighted Ratio: 0.00</b>	0	6	0.00		0.00		0.00		
1A	Augusta Pines - Augusta Creek Pointe		0.59	13	22	0.36	8	0.14	3	0.09	2
		<b>Weighted Ratio: 0.59</b>	13	22	0.36		0.14		0.09		
1A	Augusta Pines - Augusta Pines		0.59	22	37	0.22	8	0.11	4	0.27	10
		<b>Weighted Ratio: 0.59</b>	22	37	0.22		0.11		0.27		
1A	Augusta Pines - Paloma Creek		0.29	10	34	0.21	7	0.03	1	0.06	2
		<b>Weighted Ratio: 0.29</b>	10	34	0.21		0.03		0.06		
1A	Augusta Pines - Shadow Creek Estates		0.42	5	12	0.25	3	0.00	0	0.17	2
		<b>Weighted Ratio: 0.42</b>	5	12	0.25		0.00		0.17		
1A	Augusta Pines - Shadow Creek Estates - Villas		0.00	0	14	0.00	0	0.00	0	0.00	0
		<b>Weighted Ratio: 0.00</b>	0	14	0.00		0.00		0.00		
1A	Augusta Pines-The Legends		0.63	5	8	0.13	1	0.25	2	0.25	2
		<b>Weighted Ratio: 0.63</b>	5	8	0.13		0.25		0.25		
						20%		40%		40%	



## Klein ISD: Ratio of Students per Single Family Home by Subdivision

Planning Unit	Subdivision	Street Name	Total Ratio	# of Students	# of Homes	PK-5th Ratio	PK-5th Students	6th-8th Ratio	6th-8th Students	9th-12th Ratio	9th-12th Students
<b>1A</b>	Augusta Pines-Toscana at Augusta Pines		0.56	100	180	0.23	42	0.15	27	0.17	31
		<b>Weighted Ratio:</b>	<b>0.56</b>			<b>0.23</b>		<b>0.15</b>		<b>0.17</b>	
<b>31F</b>	Bainbridge Estates	Bremerton	0.88	7	8	0.38	3	0.00	0	0.50	4
		Puget	0.41	7	17	0.18	3	0.12	2	0.12	2
		Whidbey Ct	0.86	6	7	0.43	3	0.14	1	0.29	2
		<b>Weighted Ratio:</b>	<b>0.63</b>	20	32	<b>0.28</b>	42%	<b>0.09</b>	27%	<b>0.25</b>	31%
<b>6C</b>	Bella Serra	Bella Luna	0.45	9	20	0.20	4	0.15	3	0.10	2
		Bella Mountain	1.15	30	26	0.62	16	0.23	6	0.31	8
		Bella Noche	0.74	26	35	0.37	13	0.17	6	0.20	7
		Bella Jess	0.35	9	26	0.27	7	0.00	0	0.08	2
		<b>Weighted Ratio:</b>	<b>0.69</b>	74	107	<b>0.37</b>	45%	<b>0.14</b>	15%	<b>0.18</b>	40%
<b>47</b>	Big Cypress Hill Estates		0.19	3	16	0.19	3	0.00	0	0.00	0
		<b>Weighted Ratio:</b>	<b>0.19</b>			<b>0.19</b>		<b>0.00</b>		<b>0.00</b>	
<b>60</b>	Blue Creek	Miller House	0.79	33	42	0.43	18	0.21	9	0.14	6
		Bay Lodge	1.44	39	27	0.93	25	0.26	7	0.26	7
		Blue Creek Ranch	1.38	58	42	0.67	28	0.36	15	0.36	15
		<b>Weighted Ratio:</b>	<b>1.17</b>			<b>0.64</b>	100%	<b>0.28</b>	0%	<b>0.25</b>	0%
				130	111		55%		24%		22%
<b>5B</b>	Boudreaux Gardens MHP	Sharon Pkwy	0.29	4	14	0.21	3	0.07	1	0.00	0
		Candy Ct	0.75	9	12	0.33	4	0.17	2	0.25	3
		Margie Ct	0.67	8	12	0.25	3	0.33	4	0.08	1
		<b>Weighted Ratio:</b>	<b>0.55</b>	21	38	<b>0.26</b>	48%	<b>0.18</b>	33%	<b>0.11</b>	19%
<b>19A</b>	Brentwood Lakes	Brentwood Lakes	0.25	2	8	0.13	1	0.00	0	0.13	1
		Courtney Pine	0.29	5	17	0.12	2	0.00	0	0.18	3
		Victoria Lakes	0.21	3	14	0.07	1	0.00	0	0.14	2
		<b>Weighted Ratio:</b>	<b>0.26</b>	10	39	<b>0.10</b>	40%	<b>0.00</b>	0%	<b>0.15</b>	60%



## Klein ISD: Ratio of Students per Single Family Home by Subdivision

Planning Unit	Subdivision	Street Name	Total Ratio	# of Students	# of Homes	PK-5th Ratio	PK-5th Students	6th-8th Ratio	6th-8th Students	9th-12th Ratio	9th-12th Students
<b>13B</b>	Bridgestone Lakes	Bridgestone Pine	0.00	0	42	0.00		0.00		0.00	
		Bridgestone Cliff	0.00	0	10	0.00		0.00		0.00	
		Bridgestone Point	0.00	0	2	0.00		0.00		0.00	
		Bridgestone Ridge	0.00	0	21	0.00		0.00		0.00	
		<b>Weighted Ratio:</b>	<b>0.00</b>	<b>0</b>	<b>75</b>		<b>0%</b>		<b>0%</b>		<b>0%</b>
<b>4B</b>	Champion Lakes Estates		0.44	16	36	0.17	6	0.11	4	0.17	6
			<b>Weighted Ratio:</b>	<b>0.44</b>	<b>16</b>	<b>36</b>		<b>38%</b>		<b>25%</b>	
<b>25</b>	Champion Pines	Champion Pines	0.50	5	10	0.30	3	0.00	0	0.20	2
		Theissetta	1.00	10	10	0.50	5	0.20	2	0.30	3
		Timberwork	0.33	2	6	0.17	1	0.00	0	0.17	1
			<b>Weighted Ratio:</b>	<b>0.65</b>	<b>17</b>	<b>26</b>		<b>53%</b>		<b>12%</b>	
<b>23B</b>	Champion Springs	Mountain Crest	0.93	26	28	0.39	11	0.18	5	0.36	10
		Carroll Lake	0.57	16	28	0.14	4	0.18	5	0.25	7
		Granite Gorge	0.37	11	30	0.27	8	0.03	1	0.07	2
		Desert Palms	0.44	7	16	0.31	5	0.00	0	0.13	2
			<b>Weighted Ratio:</b>	<b>0.59</b>	<b>60</b>	<b>102</b>		<b>47%</b>		<b>18%</b>	
<b>25</b>	Champion Woods Estates		0.40	39	97	0.08	8	0.10	10	0.22	21
			<b>Weighted Ratio:</b>	<b>0.40</b>	<b>39</b>	<b>97</b>		<b>21%</b>		<b>26%</b>	
<b>55B</b>	Champions Crossing	Green Shoals	0.00	0	39	0.00		0.00		0.00	
		Marston River	0.00	0	22	0.00		0.00		0.00	
		Golden Lodge	0.00	0	31	0.00		0.00		0.00	
		Star Shadow	0.00	0	38	0.00		0.00		0.00	
			<b>Weighted Ratio:</b>	<b>0.00</b>	<b>0</b>	<b>130</b>		<b>0%</b>		<b>0%</b>	





## Klein ISD: Ratio of Students per Single Family Home by Subdivision

Planning Unit	Subdivision	Street Name	Total Ratio	# of Students	# of Homes	PK-5th Ratio	PK-5th Students	6th-8th Ratio	6th-8th Students	9th-12th Ratio	9th-12th Students	
<b>23C</b>	Champions Trail	Grove Mesa	0.17	2	12	0.17	2	0.00	0	0.00	0	
		Rex Creek	0.15	3	20	0.00	0	0.05	1	0.10	2	
		MacKenzie Mesa	0.46	6	13	0.31	4	0.08	1	0.08	1	
		Darbey Trace	0.50	6	12	0.25	3	0.00	0	0.25	3	
		<b>Weighted Ratio:</b>	<b>0.30</b>	17	57	<b>0.16</b>		<b>0.04</b>		<b>0.11</b>		
<b>20B</b>	Charterwood	Sugar Tree Dr	0.73	16	22	0.41	9	0.05	1	0.27	6	
		Magnolia Ridge	0.64	44	69	0.33	23	0.19	13	0.12	8	
		Sundew	0.58	14	24	0.21	5	0.17	4	0.21	5	
			<b>Weighted Ratio:</b>	<b>0.64</b>	74	115	<b>0.32</b>		<b>0.16</b>		<b>0.17</b>	
					53%		12%			35%		
<b>65</b>	Cherie Cove	Cherie Cove	0.50	2	4	0.00	0	0.25	1	0.25	1	
		Cherie Crest	1.04	54	52	0.40	21	0.29	15	0.35	18	
			<b>Weighted Ratio:</b>	<b>1.00</b>	56		<b>0.38</b>		<b>0.29</b>		<b>0.34</b>	
							50%		24%		26%	
<b>23B</b>	Colony Creek Village	Towerslone	0.77	27	35	0.40	14	0.20	7	0.17	6	
		Wardsworth	0.76	34	45	0.36	16	0.22	10	0.18	8	
		Ashbridge	0.50	10	20	0.15	3	0.10	2	0.25	5	
			<b>Weighted Ratio:</b>	<b>0.71</b>	71	100	<b>0.33</b>		<b>0.19</b>		<b>0.19</b>	
					38%		29%		34%			
<b>57B</b>	Copper Falls	Madison Kendall	1.29	27	21	0.62	13	0.29	6	0.38	8	
		Taylor Leigh	1.38	33	24	0.58	14	0.21	5	0.58	14	
		Kylie Springs	1.15	30	26	0.46	12	0.27	7	0.42	11	
			<b>Weighted Ratio:</b>	<b>1.27</b>	90	71	<b>0.55</b>		<b>0.25</b>		<b>0.46</b>	
					46%		27%		27%			
<b>5A</b>	Cottage Gardens		0.64	340	535	0.32	172	0.16	88	0.15	80	
			<b>Weighted Ratio:</b>	<b>0.64</b>	340		<b>0.32</b>		<b>0.16</b>		<b>0.15</b>	
					43%		20%		37%			
<b>3C</b>	Country Club Greens		0.82	83	101	0.32	32	0.23	23	0.28	28	
			<b>Weighted Ratio:</b>	<b>0.82</b>	83		<b>0.32</b>		<b>0.23</b>		<b>0.28</b>	
					51%		26%		24%			
					39%		28%		34%			



## Klein ISD: Ratio of Students per Single Family Home by Subdivision

Planning Unit	Subdivision	Street Name	Total Ratio	# of Students	# of Homes	PK-5th Ratio	PK-5th Students	6th-8th Ratio	6th-8th Students	9th-12th Ratio	9th-12th Students
<b>31A</b>	Country Lake Estates	Country Mountain	0.00	0	16	0.00		0.00		0.00	
		Country Canyon	0.00	0	13	0.00		0.00		0.00	
		Country Pines	0.00	0	25	0.00		0.00		0.00	
		Country Trails	0.00	0	33	0.00		0.00		0.00	
		<b>Weighted Ratio:</b>	<b>0.00</b>	<b>0</b>	<b>87</b>		<b>0%</b>		<b>0%</b>		<b>0%</b>
<b>12A</b>	Covington Bridge	Rose Quartz	0.50	10	20	0.15	3	0.10	2	0.25	5
		Crestbridge	0.85	17	20	0.45	9	0.20	4	0.20	4
		Stoneydale	1.15	23	20	0.55	11	0.40	8	0.20	4
		<b>Weighted Ratio:</b>	<b>0.83</b>	<b>50</b>	<b>60</b>	<b>0.38</b>	<b>46%</b>	<b>0.23</b>	<b>28%</b>	<b>0.22</b>	<b>26%</b>
<b>6B</b>	Creekside Place	Creekside Gate	0.81	13	16	0.50	8	0.06	1	0.25	4
		Bank Shade	0.94	15	16	0.56	9	0.25	4	0.13	2
		Palomino Creek	1.19	19	16	0.38	6	0.31	5	0.50	8
		<b>Weighted Ratio:</b>	<b>0.98</b>	<b>47</b>	<b>48</b>	<b>0.48</b>	<b>49%</b>	<b>0.21</b>	<b>21%</b>	<b>0.29</b>	<b>30%</b>
<b>13B</b>	Cricket Hill Estates MHP	N Cricket	0.33	4	12	0.25	3	0.08	1	0.00	0
		S Cricket	0.56	5	9	0.33	3	0.11	1	0.11	1
		Gricket	0.00	0	12	0.00	0	0.00	0	0.00	0
		<b>Weighted Ratio:</b>	<b>0.27</b>	<b>9</b>	<b>33</b>	<b>0.18</b>	<b>49%</b>	<b>0.06</b>	<b>22%</b>	<b>0.03</b>	<b>11%</b>
<b>33A</b>	Cypress Forest Lakes		0.53	50	95	0.25	24	0.13	12	0.15	14
		<b>Weighted Ratio:</b>	<b>0.53</b>	<b>50</b>	<b>95</b>	<b>0.25</b>	<b>48%</b>	<b>0.13</b>	<b>24%</b>	<b>0.15</b>	<b>28%</b>
<b>39</b>	Cypress Trace		0.62	59	95	0.28	27	0.09	9	0.24	23
		<b>Weighted Ratio:</b>	<b>0.62</b>	<b>59</b>	<b>95</b>	<b>0.28</b>	<b>46%</b>	<b>0.09</b>	<b>15%</b>	<b>0.24</b>	<b>39%</b>



## Klein ISD: Ratio of Students per Single Family Home by Subdivision

Planning Unit	Subdivision	Street Name	Total		# of Homes		PK-5th		6th-8th		9th-12th	
			Ratio	Students	Students	Homes	Ratio	Students	Ratio	Students	Ratio	Students
<b>31C</b> <b>34B</b> <b>34D</b> <b>35A</b> <b>35B</b> <b>36</b> <b>37B</b>	Cypresswood	El James (3400-3599)	0.56	10	18	0.22	4	0.00	0	0.33	6	
		Blue Lake (3640-3699)	0.59	13	22	0.23	5	0.05	1	0.32	7	
		Blue Cypress	0.83	35	42	0.21	9	0.19	8	0.43	18	
		Arbor Terrace	0.72	18	25	0.24	6	0.20	5	0.28	7	
		Marywood (3600-3699)	0.64	18	28	0.18	5	0.25	7	0.21	6	
		Lost Oak (3600-3699)	0.54	15	28	0.43	12	0.07	2	0.04	1	
		El James (3800-3999)	0.82	18	22	0.50	11	0.05	1	0.27	6	
		Sorrel Ridge	0.30	7	23	0.09	2	0.09	2	0.13	3	
		Cypress Lake	0.47	23	49	0.12	6	0.16	8	0.18	9	
		Oxhill	0.59	23	39	0.28	11	0.15	6	0.15	6	
Rolling Terrace (4000-4099)	2.27	68	30	0.83	25	0.53	16	0.90	27			
		<b>Weighted Ratio: 0.76</b>										
			248	326		39%		23%		39%		
<b>43A</b>	Cypresswood Forest	Fonhill (8000-8099)	0.78	7	9	0.56	5	0.11	1	0.11	1	
		Friar Ct	0.13	1	8	0.13	1	0.00	0	0.00	0	
		Lobo (16200-16399)	1.22	11	9	1.00	9	0.11	1	0.11	1	
		<b>Weighted Ratio: 0.73</b>										
			19	26		79%		11%		11%		
<b>31D</b>	Cypresswood Glen - The Park at Cypresswood Glen	Bonds Creek	0.00	0	22	0.00		0.00		0.00		
		Markspring	0.00	0	12	0.00		0.00		0.00		
		Benwest Ct	0.00	0	20	0.00		0.00		0.00		
		<b>Weighted Ratio: 0.00</b>										
			0	54		0%		0%		0%		
<b>11A</b>	Dove Meadows	Rotherham	0.58	14	24	0.25	6	0.08	2	0.25	6	
		Glenbranch	0.38	33	88	0.13	11	0.13	11	0.13	11	
		Ridgewood	0.28	5	18	0.11	2	0.00	0	0.17	3	
		<b>Weighted Ratio: 0.40</b>										
			52	130		37%		25%		38%		
<b>32E</b>	Estates at Creeks End	Creek Bend	0.72	26	36	0.25	9	0.19	7	0.28	10	
		Brittany Creek	0.77	33	43	0.28	12	0.21	9	0.28	12	
		Creek Run	0.44	8	18	0.22	4	0.11	2	0.11	2	
		<b>Weighted Ratio: 0.69</b>										
			67	97		37%		27%		36%		



## Klein ISD: Ratio of Students per Single Family Home by Subdivision

Planning Unit	Subdivision	Street Name	Total Ratio	# of Students	# of Homes	PK-5th Ratio	PK-5th Students	6th-8th Ratio	6th-8th Students	9th-12th Ratio	9th-12th Students
<b>41B</b>	Estates at Wimbledon Champions	Connors Ace	0.00	0	21	0.00		0.00		0.00	
		Cash Oaks	0.00	0	26	0.00		0.00		0.00	
		Kodes Clay	0.00	0	9	0.00		0.00		0.00	
		<b>Weighted Ratio: 0.00</b>									
<b>43B</b>	Falls at Champion Forest		0.49	58	119	0.16	19	0.17	20	0.16	19
		<b>Weighted Ratio: 0.49</b>									
<b>9B</b>	Five Oaks MHP	Silca	1.29	54	42	0.64	27	0.33	14	0.31	13
		Margo	1.19	50	42	0.83	35	0.21	9	0.14	6
		Five Oaks	1.13	44	39	0.56	22	0.23	9	0.33	13
		<b>Weighted Ratio: 1.20</b>									
<b>10</b>	Forest Ridge			148	123		57%		22%		22%
		Peachstone Pl (3100-3199)	0.25	6	24	0.04	1	0.13	3	0.08	2
		Ribbon Creek (3100-3199)	0.21	5	24	0.13	3	0.00	0	0.08	2
		Beacon Grove (3100-3199)	0.50	15	30	0.27	8	0.07	2	0.17	5
		Greengate	2.07	29	14	1.00	14	0.36	5	0.71	10
		<b>Weighted Ratio: 0.60</b>									
<b>64</b>	Garden City Park			55	92		47%		18%		35%
		Cliffmarshall	0.50	14	28	0.21	6	0.18	5	0.11	3
		Proswimmer	0.29	10	34	0.12	4	0.06	2	0.12	4
		Stallings	0.42	31	73	0.19	14	0.12	9	0.11	8
		<b>Weighted Ratio: 0.41</b>									
<b>18A</b>	Glenn Haven Estates			55	135		44%		29%		27%
		Glenn Haven Estates Blvd	0.90	44	49	0.45	22	0.20	10	0.24	12
		Spring Heather	0.57	13	23	0.22	5	0.09	2	0.26	6
		Glenn Leigh	0.91	20	22	0.45	10	0.05	1	0.41	9
		Glenn Elm	0.54	14	26	0.12	3	0.19	5	0.23	6
		<b>Weighted Ratio: 0.76</b>									
				91	120		44%		20%		36%



## Klein ISD: Ratio of Students per Single Family Home by Subdivision

Planning Unit	Subdivision	Street Name	Total Ratio	# of Students	# of Homes	PK-5th Ratio	PK-5th Students	6th-8th Ratio	6th-8th Students	9th-12th Ratio	9th-12th Students
<b>5C</b>	Gleannloch Farms - Arbors		2.76	135	49	1.04	51	0.73	36	0.98	48
		<b>Weighted Ratio:</b>	<b>2.76</b>			<b>1.04</b>		<b>0.73</b>		<b>0.98</b>	
				135	49		38%		27%		36%
<b>5F</b>	Gleannloch Farms - Dove Manor	Tidy Tips	0.83	25	30	0.53	16	0.13	4	0.17	5
		Blue Cruis	0.41	9	22	0.23	5	0.09	2	0.09	2
		Prairie Clover	0.95	18	19	0.37	7	0.32	6	0.26	5
		Rose Dawn	0.66	39	59	0.44	26	0.15	9	0.07	4
		<b>Weighted Ratio:</b>	<b>0.70</b>			<b>0.42</b>		<b>0.16</b>		<b>0.12</b>	
				91	130		59%		23%		18%
<b>5F</b>	Gleannloch Farms - Gleannfield	Oxalis	0.43	3	7	0.00	0	0.14	1	0.29	2
		Cristlwood	1.33	16	12	0.83	10	0.25	3	0.25	3
		Woodberry Manor	0.63	12	19	0.42	8	0.05	1	0.16	3
		Edgeloch (9300-9699)	0.26	14	53	0.13	7	0.08	4	0.06	3
		<b>Weighted Ratio:</b>	<b>0.49</b>			<b>0.27</b>		<b>0.10</b>		<b>0.12</b>	
				45	91		56%		20%		24%
<b>5F</b>	Gleannloch Farms - Gleannmanor	Huckinston	0.71	12	17	0.35	6	0.29	5	0.06	1
		Fernwillow	0.64	27	42	0.38	16	0.14	6	0.12	5
		Letchfield Hollow	1.07	32	30	0.67	20	0.23	7	0.17	5
		Gunters Ridge	0.56	15	27	0.41	11	0.11	3	0.04	1
		<b>Weighted Ratio:</b>	<b>0.74</b>			<b>0.46</b>		<b>0.18</b>		<b>0.10</b>	
				86	116		62%		24%		14%
<b>5F</b>	Gleannloch Farms - Havenwood		0.13	6	46	0.09	4	0.00	0	0.04	2
		<b>Weighted Ratio:</b>	<b>0.13</b>			<b>0.09</b>		<b>0.00</b>		<b>0.04</b>	
				6	46		67%		0%		33%
<b>5C</b>	Gleannloch Farms - Lake Estates	Sotherloch Lake (9304-9799)	0.77	36	47	0.38	18	0.17	8	0.21	10
		Swansea Bay (9300-9499)	1.45	16	11	0.64	7	0.55	6	0.27	3
		Cardigan Bay (1300-1399)	1.00	19	19	0.26	5	0.32	6	0.42	8
		<b>Weighted Ratio:</b>	<b>0.92</b>			<b>0.39</b>		<b>0.26</b>		<b>0.27</b>	
				71	77		42%		28%		30%



## Klein ISD: Ratio of Students per Single Family Home by Subdivision

Planning Unit	Subdivision	Street Name	Total Ratio	# of Students	# of Homes	PK-5th Ratio	PK-5th Students	6th-8th Ratio	6th-8th Students	9th-12th Ratio	9th-12th Students	
<b>5C</b>	Gleannloch Farms - Manor Estates	Manor Lake Estates (1-199)	0.94	44	47	0.53	25	0.21	10	0.19	9	
		Kerloch Point	1.15	15	13	0.46	6	0.38	5	0.31	4	
		Lochbury (1-99)	2.63	21	8	1.38	11	0.63	5	0.63	5	
		<b>Weighted Ratio:</b>	<b>1.18</b>	<b>80</b>	<b>68</b>		<b>53%</b>		<b>25%</b>		<b>23%</b>	
<b>5H</b>	Gleannloch Farms - The Retreat at Gleannloch Farms		0.10	11	107	0.04	4	0.03	3	0.04	4	
			<b>Weighted Ratio:</b>	<b>0.10</b>	<b>11</b>	<b>107</b>	<b>0.04</b>		<b>0.03</b>		<b>0.04</b>	
<b>15H</b>	Gosling Pines		0.67	169	252	0.30	76	0.21	53	0.16	40	
			<b>Weighted Ratio:</b>	<b>0.67</b>	<b>169</b>	<b>252</b>	<b>0.30</b>		<b>0.21</b>		<b>0.16</b>	
							<b>36%</b>		<b>27%</b>		<b>36%</b>	
<b>49</b>	Greenwood Forest		0.33	39	118	0.14	16	0.07	8	0.13	15	
			0.35	42	121	0.19	23	0.07	9	0.08	10	
			0.56	66	118	0.27	32	0.08	10	0.20	24	
			0.28	35	124	0.10	13	0.08	10	0.10	12	
			0.30	37	124	0.11	14	0.06	8	0.12	15	
			<b>Weighted Ratio:</b>	<b>0.36</b>	<b>219</b>	<b>605</b>		<b>45%</b>		<b>0.07</b>		<b>0.13</b>
<b>53</b>	Pebble Springs		0.33	39	118	0.14	16	0.07	8	0.13	15	
			0.35	42	121	0.19	23	0.07	9	0.08	10	
			0.56	66	118	0.27	32	0.08	10	0.20	24	
<b>54A</b>	Havenwoods		0.28	35	124	0.10	13	0.08	10	0.10	12	
			0.30	37	124	0.11	14	0.06	8	0.12	15	
		<b>Weighted Ratio:</b>	<b>0.36</b>	<b>219</b>	<b>605</b>		<b>45%</b>		<b>0.07</b>		<b>0.13</b>	
<b>55C</b>	Hamill Ranch		1.18	26	22	0.59	13	0.41	9	0.18	4	
			<b>Weighted Ratio:</b>	<b>1.18</b>	<b>26</b>	<b>22</b>	<b>0.59</b>		<b>0.41</b>		<b>0.18</b>	
							<b>50%</b>		<b>35%</b>		<b>15%</b>	
<b>46</b>	Huntwick Forest		0.08	1	13	0.08	1	0.00	0	0.00	0	
			0.09	1	11	0.00	0	0.00	0	0.09	1	
			0.18	2	11	0.18	2	0.00	0	0.00	0	
			<b>Weighted Ratio:</b>	<b>0.11</b>	<b>4</b>	<b>35</b>	<b>0.09</b>		<b>0.00</b>		<b>0.03</b>	
<b>48</b>	Fountainbridge		0.71	196	277	0.32	90	0.20	56	0.18	50	
			<b>Weighted Ratio:</b>	<b>0.71</b>	<b>196</b>	<b>277</b>	<b>0.32</b>		<b>0.20</b>		<b>0.18</b>	
							<b>75%</b>		<b>0%</b>		<b>25%</b>	
<b>5E</b>	Inverness		0.71	196	277	0.32	90	0.20	56	0.18	50	
			<b>Weighted Ratio:</b>	<b>0.71</b>	<b>196</b>	<b>277</b>	<b>0.32</b>		<b>0.20</b>		<b>0.18</b>	
						<b>46%</b>		<b>29%</b>		<b>26%</b>		



## Klein ISD: Ratio of Students per Single Family Home by Subdivision

Planning Unit	Subdivision	Street Name	Total Ratio	# of Students	# of Homes	PK-5th		6th-8th		9th-12th	
						Ratio	Students	Ratio	Students	Ratio	Students
<b>65</b>	Inwood North	Fair Forest (5400-5699)	0.67	38	57	0.25	14	0.11	6	0.32	18
		Fairview Forest (5400-5699)	0.91	52	57	0.49	28	0.16	9	0.26	15
		Canyon Forest	0.77	47	61	0.25	15	0.11	7	0.41	25
		Greenhill Forest	0.62	38	61	0.34	21	0.15	9	0.13	8
		Ogden Forest	0.41	15	37	0.16	6	0.16	6	0.08	3
	Maywood Forest	0.59	24	41	0.17	7	0.17	7	0.24	10	
		<b>Weighted Ratio: 0.68</b>		<b>214</b>	<b>314</b>		<b>43%</b>		<b>21%</b>		<b>37%</b>
<b>2</b>	Klein Meadows	Silent Meadow (25000-25099)	1.57	11	7	0.43	3	0.57	4	0.57	4
		Iberis Meadows	1.00	5	5	0.60	3	0.20	1	0.20	1
		Sorrel Meadows	0.47	21	45	0.27	12	0.11	5	0.09	4
		Barnby (25200-25499)	0.72	49	68	0.35	24	0.21	14	0.16	11
			<b>Weighted Ratio: 0.69</b>		<b>86</b>	<b>125</b>		<b>49%</b>		<b>28%</b>	
<b>56A</b>	Kleinbrook		0.84	410	486	0.35	172	0.20	95	0.29	143
		<b>Weighted Ratio: 0.84</b>		<b>410</b>	<b>486</b>		<b>42%</b>		<b>23%</b>		<b>35%</b>
<b>43A</b>	Kleinwood	Fountaingrove	2.00	34	17	0.82	14	0.65	11	0.53	9
		Lichfield	0.00	0	22	0.00	0	0.00	0	0.00	0
		Feliciana	0.35	7	20	0.10	2	0.10	2	0.15	3
		<b>Weighted Ratio: 0.69</b>		<b>41</b>	<b>59</b>		<b>39%</b>		<b>32%</b>		<b>29%</b>
<b>40</b>	Lafone Estates	Lafone	1.19	19	16	0.44	7	0.38	6	0.38	6
		<b>Weighted Ratio: 1.19</b>		<b>19</b>	<b>16</b>		<b>37%</b>		<b>32%</b>		<b>32%</b>
<b>6C</b>	Lakes at Avalon Village		0.99	112	113	0.44	50	0.20	23	0.35	39
		<b>Weighted Ratio: 0.99</b>		<b>112</b>	<b>113</b>		<b>45%</b>		<b>21%</b>		<b>35%</b>
<b>33B</b>	Lakes of Cypress Forest		0.48	67	140	0.25	35	0.10	14	0.13	18
		<b>Weighted Ratio: 0.48</b>		<b>67</b>	<b>140</b>		<b>52%</b>		<b>21%</b>		<b>27%</b>



## Klein ISD: Ratio of Students per Single Family Home by Subdivision

Planning Unit	Subdivision	Street Name	Total Ratio	# of Students	# of Homes	PK-5th Ratio	PK-5th Students	6th-8th Ratio	6th-8th Students	9th-12th Ratio	9th-12th Students
<b>22</b>	Lakes of Sterling Gate		0.49	25	51	0.04	2	0.12	6	0.33	17
		<b>Weighted Ratio:</b>	<b>0.49</b>			<b>0.04</b>		<b>0.12</b>		<b>0.33</b>	
<b>1A</b>	Londonderry		0.94	30	32	0.34	11	0.38	12	0.22	7
		Aughton Dr	0.78	36	46	0.30	14	0.22	10	0.26	12
		Burgh Castle	0.71	24	34	0.26	9	0.18	6	0.26	9
		<b>Weighted Ratio:</b>	<b>0.80</b>	25	51	<b>0.30</b>	8%	<b>0.25</b>	24%	<b>0.25</b>	68%
<b>32C</b>	Louetta Glen		0.00	0	15	0.00	0	0.00	0	0.00	0
		Treasure Mountain	0.00	0	13	0.00	0	0.00	0	0.00	0
		Cloverlea	0.62	8	13	0.23	3	0.31	4	0.08	1
		<b>Weighted Ratio:</b>	<b>0.20</b>	8	41	<b>0.07</b>	38%	<b>0.10</b>	31%	<b>0.02</b>	31%
<b>32A</b>	Louetta Lakes		0.72	23	32	0.25	8	0.16	5	0.31	10
		Sandleigh	0.50	7	14	0.21	3	0.21	3	0.07	1
		Blue Fovant	0.71	12	17	0.18	3	0.29	5	0.24	4
		<b>Weighted Ratio:</b>	<b>0.67</b>	42	63	<b>0.22</b>	38%	<b>0.21</b>	50%	<b>0.24</b>	13%
<b>32A</b>	Louetta Woods		0.79	23	29	0.34	10	0.14	4	0.31	9
		Louetta Oak Dr	0.65	17	26	0.46	12	0.08	2	0.12	3
		Louetta Falls	0.19	4	21	0.10	2	0.05	1	0.05	1
		<b>Weighted Ratio:</b>	<b>0.58</b>	44	76	<b>0.32</b>	33%	<b>0.09</b>	31%	<b>0.17</b>	36%
<b>16</b>	Lyndhurst Village		0.00	0	22	0.00	0	0.00	0	0.00	0
		Lyndhurst Village	0.00	0	14	0.00	0	0.00	0	0.00	0
		Vanhorn	0.00	0	7	0.00	0	0.00	0	0.00	0
		Lewisham	0.00	0	8	0.00	0	0.00	0	0.00	0
		<b>Weighted Ratio:</b>	<b>0.00</b>	0	51	<b>0.00</b>	55%	<b>0.00</b>	16%	<b>0.00</b>	30%
<b>20B</b>	Majestic Oaks		0.78	21	27	0.37	10	0.15	4	0.26	7
		Lausanne	0.71	25	35	0.34	12	0.20	7	0.17	6
		Cutten (15900-16099)	0.92	12	13	0.23	3	0.23	3	0.46	6
		<b>Weighted Ratio:</b>	<b>0.77</b>	0	51	<b>0.33</b>	0%	<b>0.19</b>	0%	<b>0.25</b>	0%





## Klein ISD: Ratio of Students per Single Family Home by Subdivision

Planning Unit	Subdivision	Street Name	Total Ratio	# of Students	# of Homes	PK-5th Ratio	PK-5th Students	6th-8th Ratio	6th-8th Students	9th-12th Ratio	9th-12th Students
				58	75		43%		24%		33%
<b>46</b>	Marble Gate Court	Marble Staff	0.00	0	10	0.00	0	0.00	0	0.00	0
		Rose Marble	0.00	0	8	0.00	0	0.00	0	0.00	0
		Marble Cottage	0.00	0	6	0.00	0	0.00	0	0.00	0
		<b>Weighted Ratio:</b>	<b>0.00</b>			<b>0.00</b>		<b>0.00</b>		<b>0.00</b>	
				0	24		0%		0%		0%
<b>13B</b>	Meadow Hill Run-Park at Meadow Hill Run		0.88	134	153	0.42	65	0.24	36	0.22	33
		<b>Weighted Ratio:</b>	<b>0.88</b>			<b>0.42</b>		<b>0.24</b>		<b>0.22</b>	
				134	153		49%		27%		25%
<b>19C</b>	Memorial Creek	Memorial Creek	0.63	25	40	0.13	5	0.20	8	0.30	12
		Split Creek	0.65	11	17	0.24	4	0.12	2	0.29	5
		High Creek	0.67	8	12	0.00	0	0.25	3	0.42	5
		<b>Weighted Ratio:</b>	<b>0.64</b>			<b>0.13</b>		<b>0.19</b>		<b>0.32</b>	
				44	69		20%		30%		50%
<b>18A</b>	Memorial Northwest	Null	0.24	4	17	0.00	0	0.12	2	0.12	2
<b>18B</b>		Downington	0.71	12	17	0.29	5	0.24	4	0.18	3
<b>24A</b>		Shadow Valley	1.02	65	64	0.39	25	0.22	14	0.41	26
<b>24B</b>		Vintage Wood	1.35	35	26	0.58	15	0.15	4	0.62	16
<b>25</b>		Oak Moss (7900-8299)	0.57	25	44	0.34	15	0.07	3	0.16	7
		River Willow	0.32	12	38	0.05	2	0.11	4	0.16	6
		Canyon Pine	0.36	8	22	0.09	2	0.14	3	0.14	3
		Hertfordshire	0.86	19	22	0.41	9	0.18	4	0.27	6
		Oxfordshire	0.55	24	44	0.41	18	0.07	3	0.07	3
		<b>Weighted Ratio:</b>	<b>0.69</b>			<b>0.31</b>		<b>0.14</b>		<b>0.24</b>	
				204	294		45%		20%		35%
<b>4B</b>	Memorial Springs		0.66	597	907	0.32	288	0.16	149	0.18	160
		<b>Weighted Ratio:</b>	<b>0.66</b>			<b>0.32</b>		<b>0.16</b>		<b>0.18</b>	
				597	907		48%		25%		27%



## Klein ISD: Ratio of Students per Single Family Home by Subdivision

Planning Unit	Subdivision	Street Name	Total Ratio	# of Students	# of Homes	PK-5th Ratio	PK-5th Students	6th-8th Ratio	6th-8th Students	9th-12th Ratio	9th-12th Students
<b>32E</b>	Middlecreek Village	Lemmingham	0.00	0	21	0.00		0.00		0.00	
		Linseed	0.00	0	18	0.00		0.00		0.00	
		Littlefield	0.00	0	18	0.00		0.00		0.00	
		Meadow Tree (2800-2999)	0.00	0	12	0.00		0.00		0.00	
		<b>Weighted Ratio: 0.00</b>	<b>0</b>	<b>69</b>	<b>0.00</b>	<b>0%</b>	<b>0%</b>	<b>0%</b>	<b>0%</b>	<b>0%</b>	<b>0%</b>
<b>6B</b>	Miramar Lake	Calico Canyon	1.03	30	29	0.45	13	0.24	7	0.34	10
		Terra Valley	1.03	31	30	0.43	13	0.27	8	0.33	10
		Sierra Dawn	0.76	25	33	0.18	6	0.30	10	0.27	9
		Serrano Lake	0.76	13	17	0.29	5	0.24	4	0.24	4
		<b>Weighted Ratio: 0.91</b>	<b>99</b>	<b>109</b>	<b>0.91</b>	<b>37%</b>	<b>29%</b>	<b>33%</b>	<b>29%</b>	<b>33%</b>	
<b>12A</b>	Normandy Forest	Deauville	0.66	52	79	0.34	27	0.09	7	0.23	18
		Florette	1.10	46	42	0.55	23	0.29	12	0.26	11
		Manon	0.79	23	29	0.28	8	0.17	5	0.34	10
		<b>Weighted Ratio: 0.81</b>	<b>121</b>	<b>150</b>	<b>0.81</b>	<b>48%</b>	<b>20%</b>	<b>32%</b>	<b>20%</b>	<b>32%</b>	
<b>1D</b>	Northampton Estates - The Greens of Northampton Estates	Butler Oak Ct	0.40	6	15	0.13	2	0.20	3	0.07	1
		Squirecrest Ct	0.56	5	9	0.11	1	0.11	1	0.33	3
		Taylor Way	1.00	2	2	0.50	1	0.50	1	0.00	0
		<b>Weighted Ratio: 0.50</b>	<b>13</b>	<b>26</b>	<b>0.50</b>	<b>48%</b>	<b>20%</b>	<b>32%</b>	<b>20%</b>	<b>32%</b>	
<b>1D</b>	Northampton Estates	Northampton Terrace	0.09	1	11	0.00	0	0.09	1	0.00	0
		<b>Weighted Ratio: 0.09</b>	<b>1</b>	<b>11</b>	<b>0.09</b>	<b>31%</b>	<b>38%</b>	<b>31%</b>	<b>38%</b>		
<b>56B</b>	Northcliffe Manor	Swinden	1.19	51	43	0.49	21	0.26	11	0.44	19
		Lufborough	1.00	39	39	0.49	19	0.33	13	0.18	7
		Stonehenge Trail	0.82	69	84	0.39	33	0.21	18	0.21	18
		<b>Weighted Ratio: 0.96</b>	<b>159</b>	<b>166</b>	<b>0.96</b>	<b>46%</b>	<b>26%</b>	<b>28%</b>	<b>26%</b>	<b>28%</b>	



## Klein ISD: Ratio of Students per Single Family Home by Subdivision

Planning Unit	Subdivision	Street Name	Total Ratio	# of Students	# of Homes	PK-5th Ratio	PK-5th Students	6th-8th Ratio	6th-8th Students	9th-12th Ratio	9th-12th Students
15A	Northcrest Village		0.58	184	318	0.30	94	0.15	47	0.14	43
		<b>Weighted Ratio: 0.58</b>				0.30		0.15		0.14	
5D	Northern Point		0.58	184	318		51%		26%		23%
		Breezy Cove Ct	0.58	7	12	0.42	5	0.08	1	0.08	1
		Flying Geese	0.89	39	44	0.39	17	0.30	13	0.20	9
		Log Cabin	0.75	44	59	0.44	26	0.14	8	0.17	10
		Seven Sisters	0.72	28	39	0.49	19	0.10	4	0.13	5
	<b>Weighted Ratio: 0.77</b>				0.44		0.17		0.16		
63C	Northwest Park Colony		0.63	27	43	0.28	12	0.12	5	0.23	10
		<b>Weighted Ratio: 0.63</b>			0.28		0.12		0.23		
63A				27	43		44%		19%		37%
1A	Oakmont Village-The Preserve		0.00	0	48	0.00		0.00		0.00	
		<b>Weighted Ratio: 0.00</b>				0.00		0.00		0.00	
1A	Oak Trace-The Preserve		0.00	0	48		0%		0%		0%
		<b>Weighted Ratio: 0.00</b>									
1A	Oak Hill Estates-The Preserve		0.00	0	48	0.00		0.00		0.00	
		<b>Weighted Ratio: 0.00</b>				0.00		0.00		0.00	
26 27A 28A	Oakwood Glen		1.00	37	37	0.49	18	0.32	12	0.19	7
		Stoney River Dr	1.00	37	37	0.49	18	0.32	12	0.19	7
		Huntbrook	0.85	33	39	0.36	14	0.28	11	0.21	8
		River Mill (6800-7199)	0.36	17	47	0.15	7	0.06	3	0.15	7
		Briarfield	0.53	10	19	0.21	4	0.05	1	0.26	5
		Telegraph Creek	2.48	62	25	1.16	29	0.52	13	0.80	20
Falling Waters	1.10	34	31	0.65	20	0.16	5	0.29	9		
	<b>Weighted Ratio: 0.97</b>			193	198	0.46	48%	0.23	23%	0.28	29%



## Klein ISD: Ratio of Students per Single Family Home by Subdivision

Planning Unit	Subdivision	Street Name	Total Ratio	# of Students	# of Homes	PK-5th Ratio	PK-5th Students	6th-8th Ratio	6th-8th Students	9th-12th Ratio	9th-12th Students
<b>17</b>	Oakwood Glen West	Creekfield	0.59	22	37	0.24	9	0.16	6	0.19	7
		Echobend	0.54	13	24	0.13	3	0.13	3	0.29	7
		Easybrook	0.76	13	17	0.35	6	0.24	4	0.18	3
		<b>Weighted Ratio: 0.62</b>	46	78	0.23	27%	0.22	35%			
<b>3A</b>	Pine Trace Village	<b>Weighted Ratio: 0.42</b>	19	45	0.27	12	0.11	5	0.04	2	
		<b>Weighted Ratio: 0.42</b>	19	45	0.27	12	0.11	5	0.04	2	
		<b>Weighted Ratio: 0.42</b>	19	45	0.27	12	0.11	5	0.04	2	
<b>4A</b>	Pinecrest Forest	Lucky Meadow	0.39	22	57	0.23	13	0.04	2	0.12	7
		Crescent Pass	0.55	23	42	0.36	15	0.10	4	0.10	4
		Piney Bend	0.63	55	87	0.37	32	0.11	10	0.15	13
		<b>Weighted Ratio: 0.54</b>	100	186	0.32	63%	0.09	11%			
<b>6D</b>	Pinewood Place MHP	Lodgepole	1.20	18	15	0.80	12	0.07	1	0.33	5
		White Pine	1.04	24	23	0.74	17	0.13	3	0.17	4
		Torrey Pine	0.68	19	28	0.39	11	0.14	4	0.14	4
		<b>Weighted Ratio: 0.92</b>	61	66	0.61	60%	0.12	16%			
<b>2</b>	Princeton Place	0.63	124	197	0.29	58	0.17	34	0.16	32	
		<b>Weighted Ratio: 0.63</b>	124	197	0.29	58	0.17	34	0.16	32	
		<b>Weighted Ratio: 0.63</b>	124	197	0.29	58	0.17	34	0.16	32	
<b>13A</b>	Rhodes Landing	Amorgas Isle	0.89	31	35	0.43	15	0.20	7	0.26	9
		Asitpalia	1.08	40	37	0.59	22	0.22	8	0.27	10
		Kasos Isle	0.64	18	28	0.32	9	0.07	2	0.25	7
		<b>Weighted Ratio: 0.89</b>	89	100	0.46	47%	0.17	26%			
<b>2</b>	Saddlebrook Ranch	0.39	67	171	0.25	42	0.08	14	0.06	11	
		<b>Weighted Ratio: 0.39</b>	67	171	0.25	42	0.08	14	0.06	11	
			67	171		63%		21%		16%	



## Klein ISD: Ratio of Students per Single Family Home by Subdivision

Planning Unit	Subdivision	Street Name	Total Ratio	# of Students	# of Homes	PK-5th Ratio	PK-5th Students	6th-8th Ratio	6th-8th Students	9th-12th Ratio	9th-12th Students
<b>15F</b>	Senterra Lakes		0.61	56	92	0.32	29	0.16	15	0.13	12
		<b>Weighted Ratio:</b>	<b>0.61</b>			<b>0.32</b>		<b>0.16</b>		<b>0.13</b>	
<b>29</b>	Spring Creek Court		0.80	8	10	0.40	4	0.00	0	0.40	4
		Sedona Springs	0.67	4	6	0.00	0	0.17	1	0.50	3
		Woodbury Springs	1.04	24	23	0.57	13	0.26	6	0.22	5
		Amelia Springs	0.30	6	20	0.00	0	0.15	3	0.15	3
		<b>Weighted Ratio:</b>	<b>0.71</b>	56	92	<b>0.29</b>	52%	<b>0.17</b>	27%	<b>0.25</b>	21%
<b>32D</b>	Spring Landing		1.00	39	39	0.49	19	0.26	10	0.26	10
		Spring Flower	0.52	16	31	0.10	3	0.16	5	0.26	8
		Spring Bluff	1.21	29	24	0.67	16	0.25	6	0.29	7
		Spring Mission	<b>Weighted Ratio:</b>	<b>0.89</b>	84	94	<b>0.40</b>	40%	<b>0.22</b>	24%	<b>0.27</b>
<b>9C</b>	Spring Oaks MHP		0.07	3	44	0.00	0	0.02	1	0.05	2
		Pine	0.34	14	41	0.12	5	0.12	5	0.10	4
		Live Oak Ln	1.06	19	18	0.44	8	0.28	5	0.33	6
		Pin Oak Ln	<b>Weighted Ratio:</b>	<b>0.35</b>	36	103	<b>0.13</b>	45%	<b>0.11</b>	25%	<b>0.12</b>
<b>6C</b>	Spring Terrace		0.83	445	538	0.36	196	0.18	97	0.28	152
		Springfield Garden	<b>Weighted Ratio:</b>	<b>0.83</b>	445	538	<b>0.36</b>	36%	<b>0.18</b>	31%	<b>0.28</b>
<b>6B</b>	Spring Village Estates		0.11	1	9	0.00	0	0.11	1	0.00	0
			<b>Weighted Ratio:</b>	<b>0.11</b>	1	9	<b>0.00</b>	44%	<b>0.11</b>	22%	<b>0.00</b>
<b>15D</b>	Springbrook		0.60	21	35	0.34	12	0.11	4	0.14	5
		Fairbrook Park	0.88	21	24	0.58	14	0.08	2	0.21	5
		Shadow River	0.61	20	33	0.36	12	0.09	3	0.15	5
		Winter Mountain	<b>Weighted Ratio:</b>	<b>0.67</b>	62	92	<b>0.41</b>	61%	<b>0.10</b>	15%	<b>0.16</b>



## Klein ISD: Ratio of Students per Single Family Home by Subdivision

Planning Unit	Subdivision	Street Name	Total Ratio	# of Students	# of Homes	PK-5th Ratio	PK-5th Students	6th-8th Ratio	6th-8th Students	9th-12th Ratio	9th-12th Students
<b>7A</b>	Sterling Ridge at Northampton	Star Ledge (6700-6899)	1.00	15	15	0.40	6	0.27	4	0.33	5
		<b>Weighted Ratio: 1.00</b>									
<b>4C</b>	Stonepine	Stonepine Creek	0.69	9	13	0.38	5	0.08	1	0.23	3
		Stonepine Meadow Ct	0.83	10	12	0.42	5	0.33	4	0.08	1
		Standing Pine	0.43	12	28	0.25	7	0.04	1	0.14	4
		<b>Weighted Ratio: 0.58</b>									
				15	15		40%		27%		33%
<b>5A</b>	Sugarberry Place MHP	Mulberry Park	1.00	23	23	0.43	10	0.35	8	0.22	5
		Cedarberry	0.70	7	10	0.10	1	0.40	4	0.20	2
		Datewood	0.40	4	10	0.30	3	0.10	1	0.00	0
		<b>Weighted Ratio: 0.79</b>									
				31	53		55%		19%		26%
<b>39</b>	Terranova West	Surreywest	0.70	23	33	0.33	11	0.06	2	0.30	10
		Woodlode	0.63	25	40	0.28	11	0.13	5	0.23	9
		Windtree	0.60	6	10	0.20	2	0.10	1	0.30	3
		<b>Weighted Ratio: 0.65</b>									
				34	43		41%		38%		21%
<b>39</b>	Terravista	Braxton Grove	0.00	0	6	0.00		0.00		0.00	
		Oakdale Meadows	0.00	0	4	0.00		0.00		0.00	
		Layton Meadows	0.00	0	5	0.00		0.00		0.00	
		Norwood Oaks	0.00	0	11	0.00		0.00		0.00	
				0	26		44%		15%		41%
<b>39</b>	Terravista - Terravista Estates		0.00	0	96	0.00		0.00		0.00	
		<b>Weighted Ratio: 0.00</b>									
<b>30A</b>	The Chancel		0.76	25	33	0.39	13	0.21	7	0.15	5
		<b>Weighted Ratio: 0.76</b>									
				25	33		0%		0%		0%
				25	33		52%		28%		20%



## Klein ISD: Ratio of Students per Single Family Home by Subdivision

Planning Unit	Subdivision	Street Name	Total Ratio	# of Students	# of Homes	PK-5th Ratio	PK-5th Students	6th-8th Ratio	6th-8th Students	9th-12th Ratio	9th-12th Students
1A	The Greens		0.08	4	49	0.02	1	0.02	1	0.04	2
		<b>Weighted Ratio: 0.08</b>				0.02		0.02		0.04	
1A	The Villas		0.00	0	17	0.00	0	0.00	0	0.00	0
		<b>Weighted Ratio: 0.00</b>				0.00		0.00		0.00	
31C	Thicket at Cypresswood		0.43	9	21	0.19	4	0.10	2	0.14	3
			0.88	15	17	0.06	1	0.29	5	0.53	9
			0.58	7	12	0.17	2	0.33	4	0.08	1
		<b>Weighted Ratio: 0.62</b>				0.14		0.22		0.26	
				31	50		23%		35%		42%
4A	Three Lakes	White River	0.31	9	29	0.14	4	0.14	4	0.03	1
		Taylor's Crossing	0.52	11	21	0.33	7	0.10	2	0.10	2
		Twin Buttes	0.78	21	27	0.59	16	0.07	2	0.11	3
<b>Weighted Ratio: 0.53</b>				41	77		66%		20%		15%
52B	Timber Meadow	Rosslare	0.94	16	17	0.47	8	0.35	6	0.12	2
		Aarons Way	1.18	39	33	0.42	14	0.30	10	0.45	15
		Heritagestone	1.09	37	34	0.47	16	0.29	10	0.32	11
		Gatton Park	1.53	95	62	0.73	45	0.37	23	0.44	27
		<b>Weighted Ratio: 1.28</b>				187	146		44%		26%
1A	Timbercrest Village MHP	Pinecrest	0.94	32	34	0.44	15	0.24	8	0.26	9
		Deer Trail	0.90	27	30	0.27	8	0.17	5	0.47	14
		Black Forest	0.68	28	41	0.34	14	0.15	6	0.20	8
<b>Weighted Ratio: 0.83</b>				87	105		43%		22%		36%
1A	Timberwilde MHP	Timberwilde	0.10	2	20	0.05	1	0.05	1	0.00	0
		Willowick	0.78	18	23	0.48	11	0.22	5	0.09	2
		Teal Trail	1.00	22	22	0.59	13	0.23	5	0.18	4
<b>Weighted Ratio: 0.65</b>				42	65		60%		26%		14%



## Klein ISD: Ratio of Students per Single Family Home by Subdivision

Planning Unit	Subdivision	Street Name	Total Ratio	# of Students	# of Homes	PK-5th Ratio	PK-5th Students	6th-8th Ratio	6th-8th Students	9th-12th Ratio	9th-12th Students
<b>30A</b>	Twin Falls		0.40	38	94	0.12	11	0.10	9	0.19	18
		<b>Weighted Ratio:</b>	<b>0.40</b>			0.12		0.10		0.19	
<b>39</b>	Villa Nova		0.50	1	2	0.00	0	0.00	0	0.50	1
		<b>Weighted Ratio:</b>	<b>0.50</b>			0.00		0.00		0.50	
<b>15E</b>	Villages of Bridgestone		0.47	9	19	0.21	4	0.16	3	0.11	2
			0.29	15	51	0.10	5	0.08	4	0.12	6
			0.00	0	8	0.00	0	0.00	0	0.00	0
			0.88	7	8	0.50	4	0.13	1	0.25	2
		<b>Weighted Ratio:</b>	<b>0.36</b>			0.15		0.09		0.12	
<b>15F</b>	Villages of Senterra Lakes		0.57	81	141	0.24	34	0.16	23	0.17	24
		<b>Weighted Ratio:</b>	<b>0.57</b>			0.24		0.16		0.17	
<b>34B</b>	Villas at Candlelight Park		1.38	11	8	0.75	6	0.25	2	0.38	3
			1.00	6	6	1.00	6	0.00	0	0.00	0
		<b>Weighted Ratio:</b>	<b>1.21</b>			0.86		0.14		0.21	
<b>20B</b>	Vintage DI Vita T.H.		0.00	0	31	0.00	0	0.00	0	0.00	0
		<b>Weighted Ratio:</b>	<b>0.00</b>			0.00		0.00		0.00	
<b>20B</b>	Vintage Royale		0.20	10	51	0.08	4	0.06	3	0.06	3
		<b>Weighted Ratio:</b>	<b>0.20</b>			0.08		0.06		0.06	
<b>3C</b>	Willow Creek Estates		0.16	13	80	0.10	8	0.03	2	0.04	3
		<b>Weighted Ratio:</b>	<b>0.16</b>			0.10		0.03		0.04	
				13	80		62%		15%		23%





## Klein ISD: Ratio of Students per Single Family Home by Subdivision

Planning Unit	Subdivision	Street Name	Total Ratio	# of Students	# of Homes	PK-5th Ratio	PK-5th Students	6th-8th Ratio	6th-8th Students	9th-12th Ratio	9th-12th Students
<b>6B</b>	Willow Dell	Willow Downs	0.78	47	60	0.33	20	0.20	12	0.25	15
		Willow Shade	0.91	31	34	0.41	14	0.26	9	0.24	8
		Holly Branch (21900-22299)	0.80	35	44	0.45	20	0.20	9	0.14	6
		<b>Weighted Ratio:</b>	<b>0.82</b>	113	138		48%		27%		26%
<b>4C</b>	Willow Falls		0.59	177	301	0.29	87	0.13	39	0.17	51
			<b>0.59</b>			<b>0.29</b>		<b>0.13</b>		<b>0.17</b>	
				177	301		49%		22%		29%
<b>6A</b>	Willow Forest	Amurwood	0.83	30	36	0.36	13	0.31	11	0.17	6
		Spring Willow	0.96	22	23	0.30	7	0.35	8	0.30	7
		Willow Forest	0.75	12	16	0.50	8	0.06	1	0.19	3
			<b>0.85</b>	64	75	<b>0.37</b>		<b>0.27</b>		<b>0.21</b>	
			0.72	97	134	0.32	43	0.17	23	0.23	31
<b>6C</b>	Willow Trace				<b>0.72</b>		<b>0.32</b>		<b>0.17</b>		<b>0.23</b>
				97	134		44%		24%		32%
<b>17</b>	Willowick Forest	Pleasantwood	0.43	6	14	0.00	0	0.14	2	0.29	4
		Bridenwood	0.29	2	7	0.14	1	0.00	0	0.14	1
		Hampton Park	0.78	7	9	0.33	3	0.22	2	0.22	2
		Saint Emillion Ct	0.63	10	16	0.06	1	0.19	3	0.38	6
			<b>0.54</b>	25	46	<b>0.11</b>		<b>0.15</b>		<b>0.28</b>	
			1.45	64	44	0.82	36	0.32	14	0.32	14
<b>61</b> <b>62A</b>	Willowood	Crisp Wood	1.45	64	44	0.82	36	0.32	14	0.32	14
		Winkle Wood	1.39	75	54	0.72	39	0.35	19	0.31	17
		Smiling Wood (7500-7699)	0.92	56	61	0.44	27	0.25	15	0.23	14
		Wind Flower	0.92	22	24	0.29	7	0.29	7	0.33	8
		Shady Tree	1.55	45	29	0.72	21	0.45	13	0.38	11
			1.77	55	31	1.16	36	0.32	10	0.29	9
		<b>Weighted Ratio:</b>	<b>1.30</b>	317	243	<b>0.68</b>	52%	<b>0.32</b>	25%	<b>0.30</b>	23%



## Klein ISD: Ratio of Students per Single Family Home by Subdivision

Planning Unit	Subdivision	Street Name	Total Ratio	# of Students	# of Homes	PK-5th Ratio	PK-5th Students	6th-8th Ratio	6th-8th Students	9th-12th Ratio	9th-12th Students
41A	Wimbledon Champions		0.47	65	139	0.09	12	0.10	14	0.28	39
		<b>Weighted Ratio: 0.47</b>				0.09		0.10		0.28	
41B	Wimbledon Champions Estates		0.00	0	38	0.00	18%	0.00	22%	0.00	60%
		<b>Weighted Ratio: 0.00</b>				0.00		0.00		0.00	
41A	Wimbledon Champions Park		0.17	16	96	0.05	5	0.03	3	0.08	8
		<b>Weighted Ratio: 0.17</b>				0.05		0.03		0.08	
2	Wimbledon Country		0.62	32	52	0.15	8	0.13	7	0.33	17
			0.14	3	22	0.09	2	0.00	0	0.05	1
			0.50	6	12	0.00	0	0.08	1	0.42	5
			0.78	14	18	0.39	7	0.22	4	0.17	3
		<b>Weighted Ratio: 0.53</b>				0.16		0.12		0.25	
2	Wimbledon Falls		0.69	101	147	0.31	45	0.18	27	0.20	29
		<b>Weighted Ratio: 0.69</b>				0.31		0.18		0.20	
41A	Wimbledon Park		0.43	12	28	0.11	3	0.04	1	0.29	8
		<b>Weighted Ratio: 0.43</b>				0.11		0.04		0.29	
15I	Windrose - Auburn Ridge		0.52	13	25	0.12	3	0.20	5	0.20	5
		<b>Weighted Ratio: 0.52</b>				0.12		0.20		0.20	
15I	Windrose - Eagle Bend		0.45	27	60	0.23	14	0.10	6	0.12	7
			1.00	14	14	0.57	8	0.21	3	0.21	3
			0.86	12	14	0.29	4	0.14	2	0.43	6
		<b>Weighted Ratio: 0.60</b>				0.30		0.13		0.18	
				53	88		49%		21%		30%

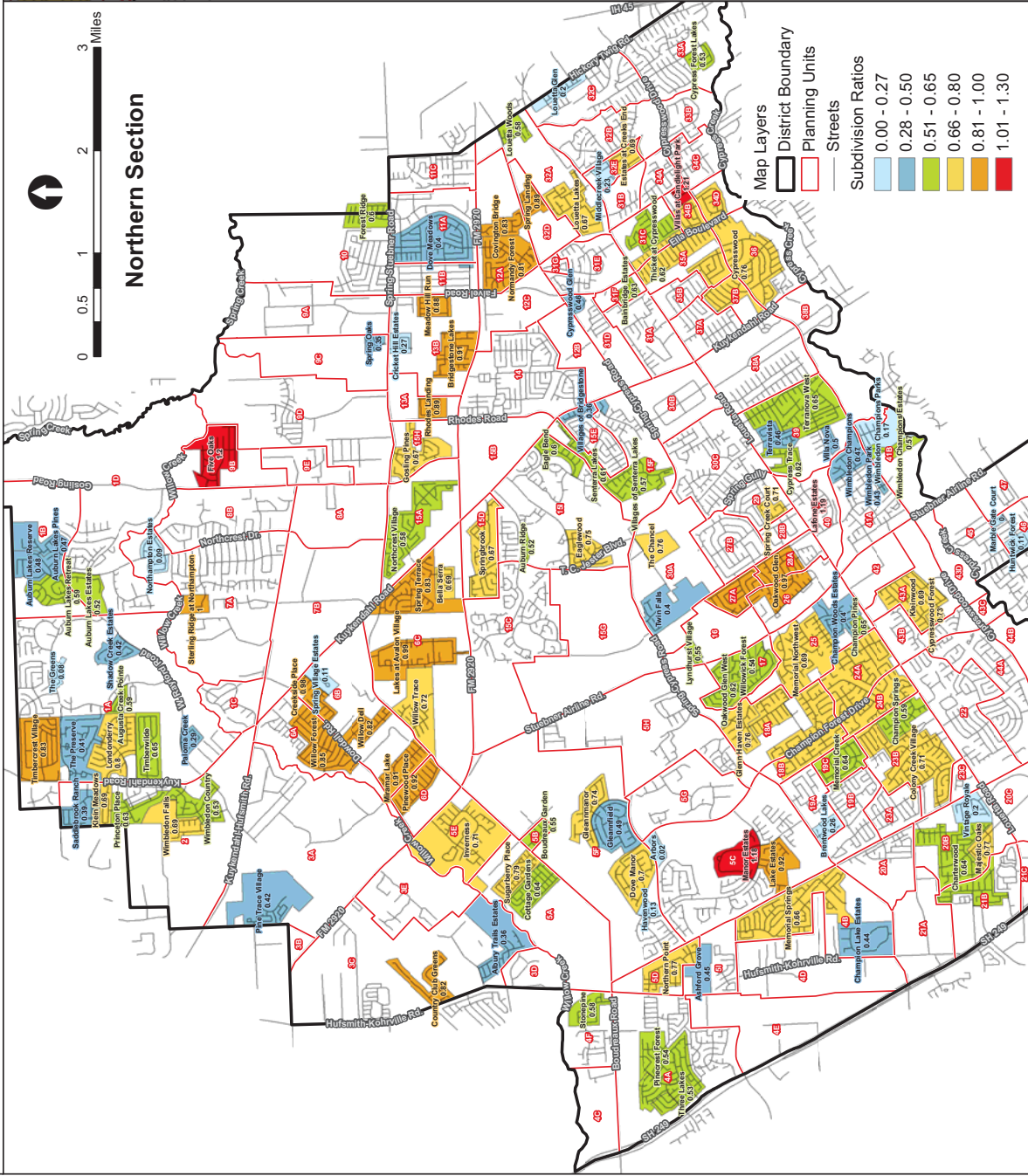


**Klein ISD:  
Ratio of Students per Single Family Home by Subdivision**

Planning Unit	Subdivision	Street Name	Total		# of		PK-5th		6th-8th		9th-12th	
			Ratio	Students	Students	Homes	Ratio	Students	Ratio	Students	Ratio	Students
151	Windrose - Eaglewood	Briarstone Ln	0.75	12	16	0.00	0	0.25	4	0.50	8	
		Evergreen Springs	0.89	34	38	0.34	13	0.26	10	0.29	11	
		Stormy Pine	0.48	10	21	0.19	4	0.19	4	0.10	2	
		<b>Weighted Ratio:</b>	<b>0.75</b>			<b>0.23</b>		<b>0.24</b>		<b>0.28</b>		
			56	75		30%		32%		38%		
<b>TOTAL:</b>				<b>10,197</b>	<b>16,201</b>		<b>4,732</b>		<b>2,428</b>		<b>3,037</b>	
<b>June 2011, TOTAL WEIGHTED RATIO:</b>						<b>0.29</b>		<b>0.51</b>		<b>1.25</b>		
<b>PERCENT BY GRADE GROUP (WEIGHTED):</b>						<b>46%</b>		<b>24%</b>		<b>30%</b>		

# Ratios of Students per Occupied Unit

By Subdivision



## Klein I.S.D.: Ratio of Students Per Household By Apartment

PU	Apartment Complex	Street Name	Total Students	Total Units	Occupied Units	% Occupied	Students per Occ. Unit	EE-5th		6th-8th		9th-12th	
								Students	Ratio	Students	Ratio	Students	Ratio
38A	Applewood Village	4500 Cypresswood	54	140	129	92%	<b>0.42</b>	25 46%	0.19	16 30%	0.12	13 24%	0.10
2	Augusta Meadows	24215 Kuykendahl Rd	51	264	243	92%	<b>0.21</b>	17 33%	0.07	13 25%	0.05	21 41%	0.09
59	Briar Park	10401 Old Bammel-N Houston	62	80	70	87%	<b>0.89</b>	33 53%	0.47	19 31%	0.27	10 16%	0.14
46	Bridgewater Landing Condos <i>*Primarily Adult Living, but some children</i>	14911 Wunderlich	18	182	173	95%	<b>0.10</b>	14 78%	0.08	3 17%	0.02	1 6%	0.01
47	Brookfield	14230 Wunderlich	56	250	238	95%	<b>0.24</b>	33 59%	0.14	6 11%	0.03	16 29%	0.07
64	Woodglen Village <i>*Formerly Casa Nube en Montgomery (Foreclosed)</i>	11111 W Montgomery	227	250	243	97%	<b>0.94</b>	127 56%	0.52	50 22%	0.21	50 22%	0.21
62A	Cedar Pointe <i>*Not included in Total</i>	7610 Fallbrook	91				<i>*Not included in totals</i>	52		19		20	
62A	Champion Forest <i>*Not included in total</i>	7330 Silent Wood Ln # 101	28	250			<i>*Not included in totals</i>	15		7		6	
47	Champion Oaks	14150 Wunderlich Dr	48	252	219	87%	<b>0.22</b>	29 60%	0.13	7 15%	0.03	12 25%	0.05
50	Champions Village	12811 Greenwood Forest	81	278	272	98%	<b>0.30</b>	47 58%	0.17	14 17%	0.05	20 25%	0.07
65	Chesapeake Village	8430 Antoine	30	72	70	98%	<b>0.43</b>	16 53%	0.23	7 23%	0.10	7 23%	0.10
47	Cottages of Champion Forest <i>*Formerly Copper Creek (Under new management)</i>	14222 Wunderlich	69	300	204	68%	<b>0.34</b>	43 62%	0.21	15 22%	0.07	11 16%	0.05
26	The Cottages of Cypresswood <i>*Formerly Kressington Place</i>	7203 Oakwood Glen	67	136	129	95%	<b>0.52</b>	31 46%	0.24	14 21%	0.11	22 33%	0.17

## Klein I.S.D.: Ratio of Students Per Household By Apartment

PU	Apartment Complex	Street Name	Total Students	Total Units	Occupied Units	%	Students per Occ. Unit	EE-5th		6th-8th		9th-12th	
								Students	Ratio	Students	Ratio	Students	Ratio
38B	Cypresswood	4607 Cypresswood	31	144	141	98%	<b>0.22</b>	13	0.09	8	0.06	10	0.07
								42%		26%		32%	
38B	Falcon Ridge	4603 Cypresswood	30	234	213	91%	<b>0.14</b>	17	0.08	8	0.04	5	0.02
								57%		27%		17%	
51	Greenwood Forest	12820 Greenwood Forest	60	316	300	95%	<b>0.20</b>	29	0.10	12	0.04	19	0.06
								48%		20%		32%	
67A	Inwood Meadows <i>left messages (40 total units)</i>	9003-9025 Antoine & 8923-8931	13	40	<b>*Not included in totals</b>			4		3		6	
								31%		23%		46%	
51	The Lexington at Champions	5007 FM 1960 West	16	89	83	93%	<b>0.19</b>	7	0.08	4	0.05	5	0.06
								44%		25%		31%	
43A	The Lodge at Cypresswood	8100 Cypresswood	68	366	355	97%	<b>0.19</b>	29	0.08	14	0.04	24	0.07
								43%		21%		35%	
42	Lyons Court <i>*Not Included in Total</i>	16303 Lyons School Rd	63	<b>*Not included in totals</b>				34		15		14	
42	Mill Creek	16339 Stuebner-Airline	106	174	139	80%	<b>0.76</b>	64	0.46	20	0.14	22	0.16
								60%		19%		21%	
46	Mittlestedt Champions Apartments	14702-14826, 14707-148; Mittlestedt Champions Dr.	25	56	56	100%	<b>0.45</b>	13	0.23	6	0.11	6	0.11
								52%		24%		24%	
37A	Oak Falls	4545 Louetta	97	144	141	98%	<b>0.69</b>	43	0.30	24	0.17	30	0.21
								44%		25%		31%	
41A	Oaks of Wimbledon	16414 Stuebner-Airline	84	184	164	89%	<b>0.51</b>	38	0.23	16	0.10	30	0.18
								45%		19%		36%	
26	Oakwood Glen <i>*Not Included in Total. Not willing to provide data.</i>	7118 Oakwood Glen Blvd	16	<b>*Not included in totals</b>				6		6		4	
63A	The Park at Willowbrook	7100 Smiling Wood Lane	138	228	205	90%	<b>0.67</b>	88	0.43	26	0.13	24	0.12
								64%		19%		17%	
63C	Primrose at Heritage Park <i>*Senior Living. Not included in total.</i>	10655 N Old Bammel	0	<b>*Not included in totals</b>									
48	Providence at Champions	5100 FM 1960	63	288	239	83%	<b>0.26</b>	31	0.13	17	0.07	15	0.06
								49%		27%		24%	
38B	The Ravinia	2400 Spring Rain	76	232	223	96%	<b>0.34</b>	37	0.17	15	0.07	24	0.11
								49%		20%		32%	

## Klein I.S.D.: Ratio of Students Per Household By Apartment

PU	Apartment Complex	Street Name	Total Students	Total Units	Occupied Units	%	Students per Occ. Unit	EE-5th		6th-8th		9th-12th	
								Students	Ratio	Students	Ratio	Students	Ratio
68	Rosslyn Heights	7015 Woodsman Trail	73	60	60	100%	1.22	42 58%	0.70	15 21%	0.25	16 22%	0.27
20C	San Cierra	15500 Cutten Rd	58	362	326	90%	0.18	27 47%	0.08	11 19%	0.03	20 34%	0.06
49	Sendera Champion Forest	12801 Champion Forest C	84	198	184	93%	0.46	45 54%	0.24	20 24%	0.11	19 23%	0.10
59	Seton Chase	7703 Seton Lake Dr	136	232	209	90%	0.65	93 68%	0.45	24 18%	0.11	19 14%	0.09
56A	Smoketree Townhomes <i>*Formerly Traces Loft Townhomes</i>	5110 Azalea Trace Dr	50	260	218	84%	0.23	27 54%	0.12	11 22%	0.05	12 24%	0.05
15I	Sorrento Village Townhomes	5600 Alvin A Klein	19	30	30	100%	0.63	8 42%	0.27	6 32%	0.20	5 26%	0.17
26	Spring Oaks	7103 & 7133 Oakwood Gl	67	184	140	76%	0.48	42 63%	0.30	10 15%	0.07	15 22%	0.11
4D	Stoneleigh Cypress Pointe	10810 Spring Cypress Rd	40	228	221	97%	0.18	21 53%	0.09	8 20%	0.04	11 28%	0.05
30A	Stoneleigh on Spring Cypress	7215 Spring Cypress Rd.	75	216	210	97%	0.36	42 56%	0.20	14 19%	0.07	19 25%	0.09
30A	Stoneleigh on The Lake	7303 Spring Cypress Rd.	37	228	221	97%	0.17	20 54%	0.09	8 22%	0.04	9 24%	0.04
38A	Terranova at Cypresswood <i>*Not included in total - retirement community</i>	5600 Cypresswood Dr.					<i>*Not included in totals</i>						
67A	Timbers of Inwood Forest	5850 & 5880 W Gulf Bank	138	374	307	82%	0.45	81 59%	0.26	25 18%	0.08	32 23%	0.10
21B	Tivoli	10110 & 10111 Chartenw	28	156	151	97%	0.19	16 57%	0.11	7 25%	0.05	5 18%	0.03
46	Trophy Club Condos <i>*Individually owned properties</i>	14515 & 14555 Wunderlich					<i>*Not included in totals</i>						

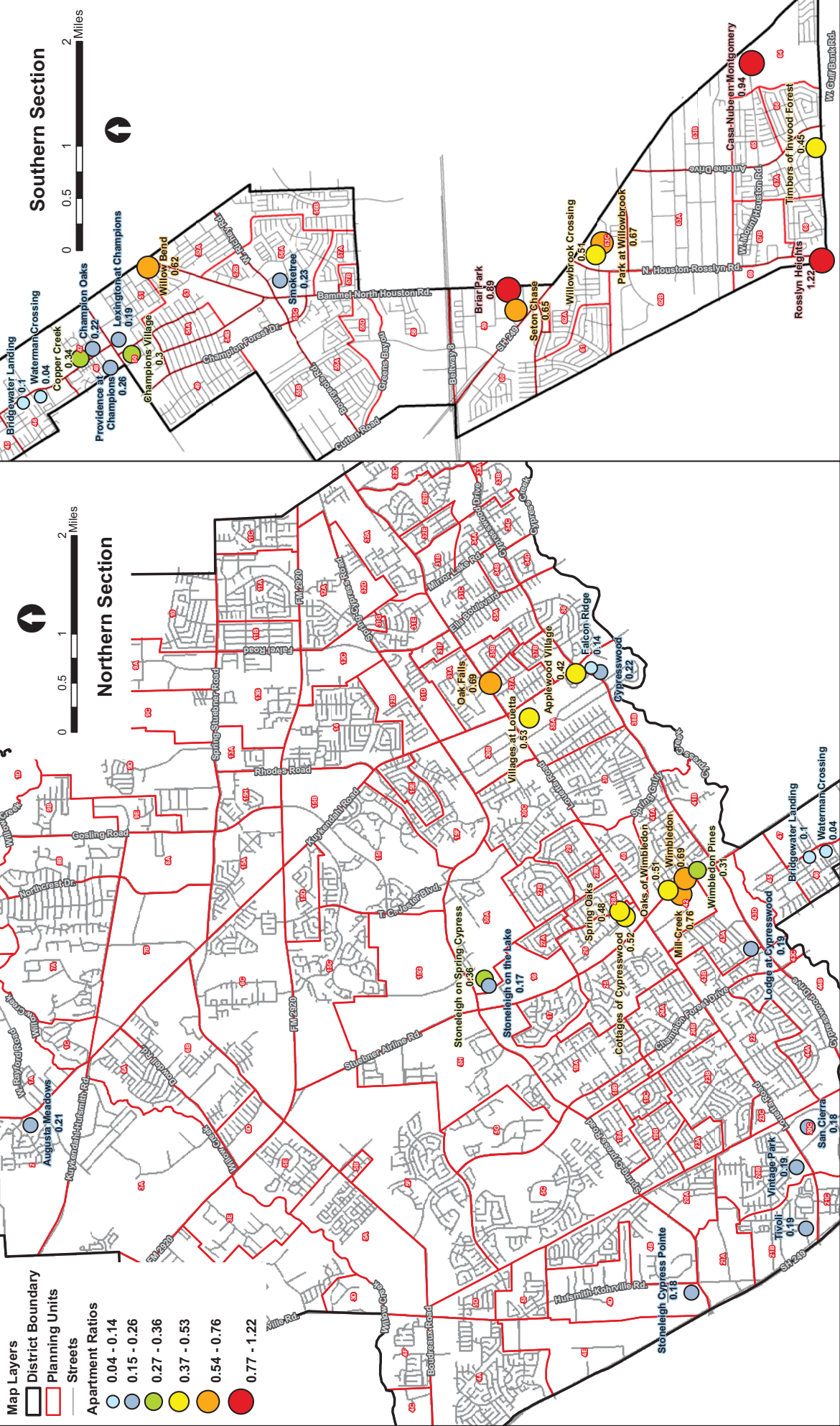
## Klein I.S.D.: Ratio of Students Per Household By Apartment

PU	Apartment Complex	Street Name	Total Students	Total Units	Occupied Units	% Occupied	Students per Occ. Unit	EE-5th Students Ratio	6th-8th Students Ratio	9th-12th Students Ratio	
<b>5G</b>	<b>Village of Gleannloch Farms</b> <i>*Not included in total - retirement community</i>	9505 Northpointe Blvd.									
<b>38A</b>	<b>Villages at Louetta</b>	5015 Louetta Rd.	151	300	285	95%	<b>0.53</b>	73 48%	26 17%	52 34% <b>0.18</b>	
<b>20B</b>	<b>Vintage Park</b>	15727 Cutten	60	324	318	98%	<b>0.19</b>	24 40%	13 22%	23 38% <b>0.07</b>	
<b>46</b>	<b>Waterman Crossing</b>	14777 Wunderlich	9	300	201	67%	<b>0.04</b>	5 56%	3 33%	1 11% <b>0.00</b>	
<b>51</b>	<b>Willow Bend</b>	13949 Bammel-N Houston	195	333	313	94%	<b>0.62</b>	105 54%	35 18%	55 28% <b>0.18</b>	
<b>63A</b>	<b>Willowbrook Crossing</b>	7150 Smiling Wood	100	208	198	95%	<b>0.51</b>	68 68%	17 17%	15 15% <b>0.08</b>	
<b>41A</b>	<b>Wimbledon</b>	16222 Stuebner-Airline	102	161	148	92%	<b>0.69</b>	49 48%	17 17%	36 35% <b>0.24</b>	
<b>41A</b>	<b>Wimbledon Pines Condos</b>	16120 Stuebner-Airline	14	51	46	90%	<b>0.31</b>	8 57%	1 7%	5 36% <b>0.11</b>	
<b>TOTAL RATIO: 3,204 9,154 8,033 88%</b>								<b>0.40</b>	<b>1,587 0.20</b>	<b>589 0.07</b>	<b>754 0.09</b>
<b>WEIGHTED PERCENT BY GRADE GROUP:</b>								<b>49.5%</b>	<b>18.4%</b>	<b>23.5%</b>	



# Ratios of Students per Occupied Unit

By Apartment Community



Klein I.S.D.: Trends in Ratios of Students per Household



Planning Unit	Subdivision	July 2003 Ratio	April 2007 Ratio	October 2009 Ratio	Sept 2010 Ratio	Sept 2011 Ratio
3C	Albury Trails Estates			0.15	0.18	0.36
58	Ash Creek			1.27	1.16	1.08
5I	Ashford Grove					0.45
5D	Ashford Place		0.57	0.70	0.65	0.51
1D	Auburn Lakes - Auburn Lakes Estates		0.17	0.48	0.43	0.52
1D	Auburn Lakes - Auburn Lakes Pines			0.62	0.64	0.47
1D	Auburn Lakes - Auburn Lakes Reserve			0.76	0.73	0.48
1D	Auburn Lakes - Auburn Lakes Retreat				0.54	0.59
1A	Augusta Pines - The Courts at Auburn Lakes		0.13	0.06	0.10	0.10
1D	Auburn Lakes - The Village		0.51	0.71	0.53	0.71
1A	Augusta Pines - Augusta Creek Estate			0.11		0.55
1A	Augusta Pines - Augusta Creek Gardens			0.00		0.00
1A	Augusta Pines - Augusta Creek Pointe			0.50	0.35	0.59
1A	Augusta Pines - Augusta Pines			1.10	0.80	0.59
1A	Augusta Pines - Paloma Creek			0.50	0.27	0.29
1A	Augusta Pines - Shadow Creek Estates			1.08	0.13	0.42
1A	Augusta Pines - Shadow Creek Estates - The Villas				0.17	0.00
1A	Augusta Pines - The Estates				1.00	
1A	Augusta Pines - The Forest		0.20			
1A	Augusta Pines - The Gardens				0.00	
1A	Augusta Pines - The Greens		0.08		0.08	
1A	Augusta Pines - The Legends at Augusta Pines		1.00	1.00	0.75	0.63
1A	Augusta Pines - The Preserve - Oak Hill Estates		0.58	0.40	0.80	
1A	Augusta Pines - The Preserve - Oak Trace		0.61	0.58	0.54	
1A	Augusta Pines - The Preserve - Oakmont Village		0.13	0.23	0.22	
1A	Augusta Pines - The Villas			0.00	0.00	
1A	Augusta Pines - Toscano		0.20			0.56
31F	Bainbridge Estates			0.92	0.61	0.63
6C	Bella Sera		0.46	0.66	0.65	0.69
32C	Bending Bough	0.74				
47	Big Cypress Hill Estates				0.44	0.19
60	Blue Creek			1.14	1.15	1.17
14	Bridgestone	0.69				
5B	Boudreaux Gardens MHP		0.73	0.47	0.61	0.55
19A	Brentwood Lakes			0.43	0.33	0.26
13B	Bridgestone Lakes			0.95	0.93	0.00
22	Champions Cove	0.69				
4B	Champions Lakes Estates		0.22	0.47	0.58	0.44
23	Champion Pines			0.42	0.65	0.65
23B	Champion Springs			0.71	0.54	0.59
25	Champion Woods Estates			0.43	0.40	0.40
55B	Champion Woods Estates - The Reserve			0.65	0.47	0.58
25	Champion Woods Estates - The Retreat			0.00	0.00	
55B	Champions Crossing			0.35	0.49	0.00
23C	Champions Trail			0.35	0.33	0.30
20B	Charterwood			0.78	0.65	0.64
65	Cherie Cove			0.85	1.06	1.00
20B	Colony Creek Village	0.87		0.63	0.65	0.71
57B	Copper Falls			1.19	1.26	1.27
5A	Cottage Gardens	0.49	0.33	0.62	0.76	0.64
3C	Country Club Greens		0.43	0.74	0.81	0.82
31A	Country Lake Estates			0.68	0.06	0.00
1A	Coventry		0.56			
12A	Covington Bridge	0.49		0.78	0.57	0.83
1C	Creek Wood Acres		0.50			
6B	Creekside Place		0.53	0.89	0.96	0.98
13B	Cricket Hill Estates MHP		0.27	0.21	0.27	0.27
55A	Cutten Green	0.66				
33A	Cypress Forest Lakes			0.36	0.65	0.53
39	Cypress Trace		0.47	0.56	0.71	0.62
35A	Cypresswood	0.83		0.77	0.69	0.76
36	Cypresswood	0.49			0.69	0.76
43A	Cypresswood Forest			0.62	0.69	0.73
31D	Cypresswood Glen - The Park at Cypresswood Glen			0.59	0.50	0.00
11A	Dove Meadows	0.66		0.53	0.41	0.40
47	Edinburgh Estates	0.45				
33A	Enchanted Oaks	0.72				
32E	Estates at Creeks End			0.64	0.67	0.69

"Light Green" subdivisions indicate continued increases in the no. of students per home. "Yellow" subdivisions show areas where ratios declined this year. (Population and Survey Analysts)

Klein I.S.D.: Trends in Ratios of Students per Household



Planning Unit	Subdivision	July 2003 Ratio	April 2007 Ratio	October 2009 Ratio	Sept 2010 Ratio	Sept 2011 Ratio
3C	Albury Trails Estates			0.15	0.18	0.36
3C	Estates at Willow Creek			0.43	0.42	
41B	Estates at Wimbeldon Champions			0.68	0.21	0.00
43B	Falls at Champions Forest			0.27		0.49
9B	Five Oaks MHP	0.87	0.78	1.20	1.14	1.20
10	Forest North	0.95				
10	Forest Ridge				0.51	0.60
64	Garden City Park	0.47		0.39	0.47	0.41
18A	Gleann Haven Estates		0.97	0.69	0.77	0.76
5C	Gleann Meadows		0.00			
5C	Gleannloch Farms (Northern)	0.41				
5C	Gleannloch Farms (Southern)	0.63				
5C	Gleannloch Farms - Arbors			0.02	0.00	2.76
5F	Gleannloch Farms - Dove Manor		0.45	0.61	0.69	0.70
5F	Gleannloch Farms - Gleannfield		0.44	0.53	0.49	0.49
5F	Gleannloch Farms - Gleannmanor		0.30	0.64	0.77	0.74
5F	Gleannloch Farms - Havenwood			0.09	0.07	0.13
5C	Gleannloch Farms - Lake Estates			1.03	0.67	0.92
5C	Gleannloch Farms - Manor Estates			1.12	1.12	1.18
5C	Gleannloch Farms - The Bluff		0.62			
5C	Gleannloch Farms - The Estates		0.92			
5C	Gleannloch Farms - The Hillcrest		0.97			
5C	Gleannloch Farms - The Paddock Estates		1.04			
5H	Gleannloch Farms - The Retreat at Gleannloch Farms			0.11	0.06	0.10
19B	Glenloch	0.77				
15H	Gosling Pines		0.65	0.61		0.67
49, 53, 54A, 54B	Greenwood Forest	0.64		0.33	0.37	0.36
55C	Hamill Ranch				1.57	1.18
7A	Hampton Oaks		0.69			
46 & 48	Huntwick Forest			0.20	0.14	0.11
9B	Hydies Crossing MHP		0.67			
5E	Inverness		0.56	0.74	0.45	0.71
65, 66, 67A	Inwood North	0.63		0.72	0.65	0.68
68	Inwood West	0.78				
2	Klein Meadows		0.12	0.82	0.75	0.69
56A & 57A	Kleinbrook			0.80	0.87	0.84
43A	Kleinwood	0.64		0.34	0.41	0.69
40	Lafone Estates			1.06	0.88	1.19
6C	Lakes at Avalon Village			0.63	0.70	0.99
5H	Lakes at Gleannloch Farms			0.76	0.87	
33B	Lakes of Cypress Forest			0.52		0.48
22	Lakes of Sterling Gate					0.49
1A	Londonderry	1.04	0.82	0.85	0.69	0.80
32C	Louetta Glen			0.41	0.34	0.20
32A	Louetta Lakes			0.77	0.69	0.67
32A	Louetta Woods			0.47	0.55	0.58
16	Lyndhurst Village		0.33	0.44	0.57	0.00
20B	Majestic Oak			0.73	0.77	0.77
46	Marble Gate Court			0.00	0.00	0.00
13B	Meadow Hill Run		0.49	0.66	0.70	0.88
19B	Memorial Chase	0.74				
19C	Memorial Creek		1.06	0.83	0.67	0.64
18A, 18B, 24A, 24B, 25	Memorial Northwest	0.76		0.49	0.66	0.69
4B & 25	Memorial Springs		0.63	0.69	0.68	0.66
32E	Middlecreek Village			0.38	0.28	0.00
6B	Miramar Lake		0.76	0.94	0.97	0.91
12A	Normandy Forest			0.84	0.80	0.81
7A	Northampton	0.71	0.41			
7A	Northampton - Northampton Forest		0.83			
7A	Northampton - Northampton Oaks		0.69			
7A	Northampton - Northampton Pines		0.74			
7A	Northampton - Sterling Ridge at Northampton		1.00			
1D	Northampton Estates - The Greens of Northampton Estates		0.42	0.31	0.46	0.50
1D	Northampton Estates			0.00	0.09	0.09
52A	Northcliffe Manor	1.10		0.98	1.01	0.96
15A	Northcrest Village		0.30	0.47	0.54	0.58
5D	Northern Pointe		0.57	0.74	0.77	0.77
63C	Northwest Park Colony			0.59	0.63	0.63

"Light Green" subdivisions indicate continued increases in the no. of students per home. "Yellow" subdivisions show areas where ratios declined this year. (Population and Survey Analysts)

Klein I.S.D.: Trends in Ratios of Students per Household



Planning Unit	Subdivision	July 2003 Ratio	April 2007 Ratio	October 2009 Ratio	Sept 2010 Ratio	Sept 2011 Ratio
3C	Albury Trails Estates			0.15	0.18	0.36
30A	Oaks of Spring Creek	0.89				
1A	Oakmont Village - The Preserve					0.00
1A	Oak Trace - The Preserve					0.00
1A	Oak Hill Estates - The Preserve					0.00
26, 27A, 28A	Oakwood Glen	0.75		0.91	0.99	0.97
17	Oakwood Glen West			0.67	0.62	0.62
8A	Oakwood Village		1.11			
3A	Pine Trace			0.30	0.03	0.42
4A	Pinecrest Forest			0.44	0.51	0.54
6D	Pinewood Place MHP		0.72	0.97	1.03	0.92
2	Princeton Place		0.69	0.58	0.62	0.63
13A	Rhodes Landing			0.84	0.80	0.89
2	Saddlebrook Ranch		0.10	0.69	0.51	0.39
15F	Senterra Lakes			0.62	0.63	0.61
29	Spring Creek Court		0.83	0.81	0.66	0.71
32A	Spring Landing	0.41		0.74	0.84	0.89
9C	Spring Oaks MHP			0.03	0.05	0.35
9B	Spring Stuebner Estates		0.33			
6C	Spring Terrace		0.81	0.60	0.94	0.83
6B	Spring Village Estates		0.33	0.38	0.44	0.11
15D	Springbrook			0.77	0.76	0.67
7A	Sterling Ridge at Northampton			1.07	1.00	1.00
4C	Stonepine		0.48	0.70	0.46	0.58
3A	Stratford at Willow Creek		0.40			
3A	Suburban Ranches		0.47			
5A	Sugarberry Place MHP		0.29	0.71	0.82	0.79
39A	Terranova West	0.87		0.55	0.58	0.65
39	Terravista			0.70	0.73	0.00
39	Terravista - Terravista Estates			0.31	0.23	
30A	The Chancel					0.76
1A	The Greens					0.08
1A	The Villas					0.00
13B	The Park at Meadowhill Run			0.37	0.44	
31C	Thicket at Cypresswood			0.70	0.62	0.62
4A	Three Lakes		0.56	0.50	0.53	0.53
52B	Timber Meadow			1.38	1.46	1.28
1A	Timbercrest Village MHP	0.72	1.14	0.88	0.89	0.83
1A	Timberwilde MHP	0.47	0.38	0.35	0.60	0.65
2	Traditions		0.65			
6B	Trailwood Estates		0.58			
30A	Twin Falls			0.39	0.43	0.40
39	Villa Nova				0.00	0.50
15E	Villages of Bridgestone				0.37	0.36
15F	Villas of Senterra Lakes			0.52	0.56	0.57
34B	Villas at Candlelight Park			0.79	1.14	1.21
20B	Vintage Di Vita Townhomes					0.00
20B	Vintage Royal			0.00	0.08	0.20
56A	The Traces	0.99				
3C	Waldenwood	0.18	0.36			
3C	Willow Creek Estates		0.08			0.16
3A	Willow Creek Manor		0.56			
7A	Willow Creek Stables		1.00			
6B	Willow Dell	0.53	0.76	0.79	0.87	0.82
4C	Willow Falls		0.43	0.74		0.59
6A	Willow Forest		0.63	0.68	0.84	0.85
5A	Willow Glen		0.38			
6A	Willow Oaks		0.69			
6C	Willow Trace				0.62	0.72
17	Willowick Forest		0.46	0.61	0.54	0.54
61 & 62A	Willowood			1.29	1.35	1.30
41A	Wimbeldon Champions			0.47	0.16	0.47
41A	Wimbeldon Champions - Estates					0.00
41A	Wimbeldon Champions - Parks					0.17
2	Wimbeldon Country		0.54	0.57	0.52	0.53
2	Wimbeldon Falls		0.41	0.74	0.82	0.69
41A	Wimbeldon Park			0.50	0.57	0.43
15I	Windrose - Arbors			0.46		

"Light Green" subdivisions indicate continued increases in the no. of students per home. "Yellow" subdivisions show areas where ratios declined this year. (Population and Survey Analysts)

Klein I.S.D.: Trends in Ratios of Students per Household



Planning Unit	Subdivision	July 2003 Ratio	April 2007 Ratio	October 2009 Ratio	Sept 2010 Ratio	Sept 2011 Ratio
3C	Albury Trails Estates			0.15	0.18	0.36
15I	Windrose - Auburn Ridge	0.41		0.52	0.52	0.52
15I	Windrose - Eagle Bend			0.37	0.64	0.60
15I	Windrose - Eaglewood			0.77	0.73	0.75
30A	The Chancel				0.00	
15C	Windrose - Trellises	0.57				
1B	The Woods of Northampton Estates	1.10				
46	Woods of Wimbledon	0.32				
	<b>TOTAL RATIO:</b>	<b>0.71</b>	<b>0.59</b>	<b>0.68</b>	<b>0.65</b>	<b>0.63</b>

*"Light Green" subdivisions indicate continued increases in the no. of students per home. "Yellow" subdivisions show areas where ratios declined this year.  
(Population and Survey Analysts)*